



POLARIS XPEDITION 2024+

## PLUG & PLAY AUTO-CANCEL UTV TURN SIGNAL KIT

Part #: 64-901    Fitment: POLARIS XPEDITION 2024+

### TOOLS NEEDED:



Side Cutter  
Pliers



Push Pin  
Pliers



Needle Nose  
Pliers



Pick



3mm Allen  
Wrench



4mm Allen  
Wrench



T-30  
Torx



T-40  
Torx



Plastic Trim  
Removal Tool



Ratchet



10mm Deep  
Well Socket



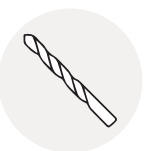
Small Flathead  
Screwdriver



Lighter /  
Heat Gun



Drill



11/32"  
Drill Bit



1/4"  
Drill Bit



Wire  
Fish

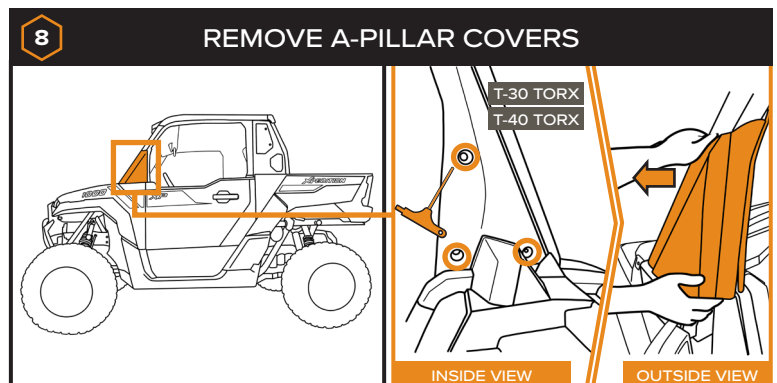
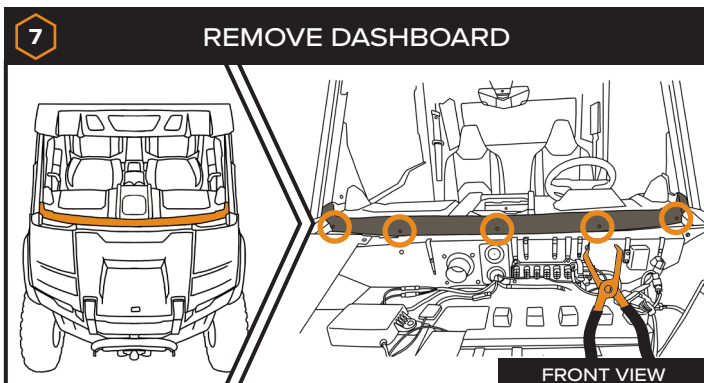
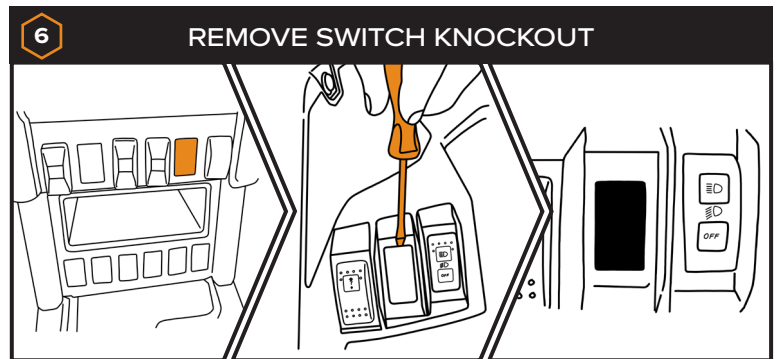
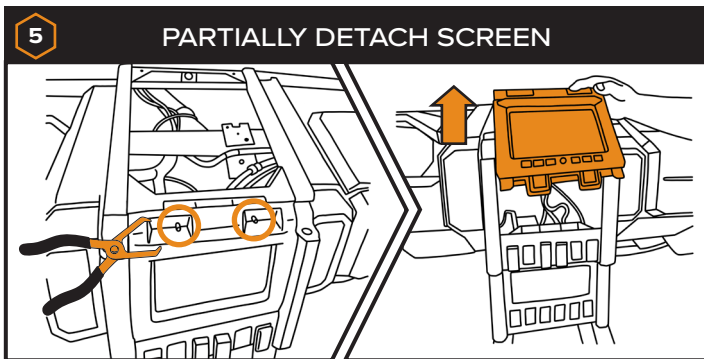
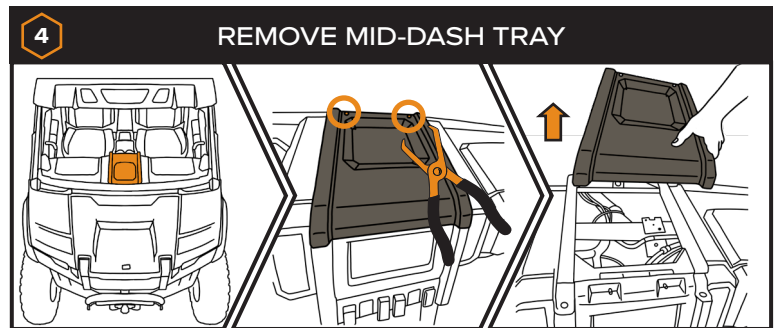
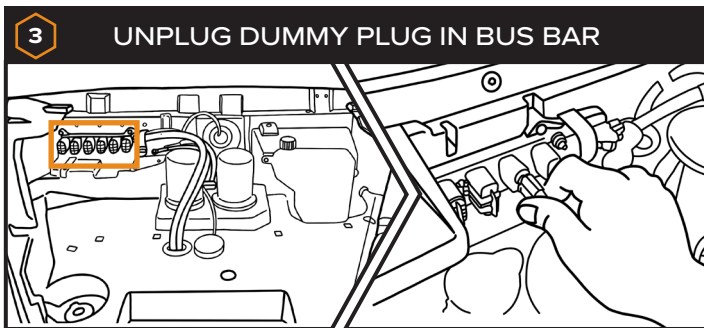
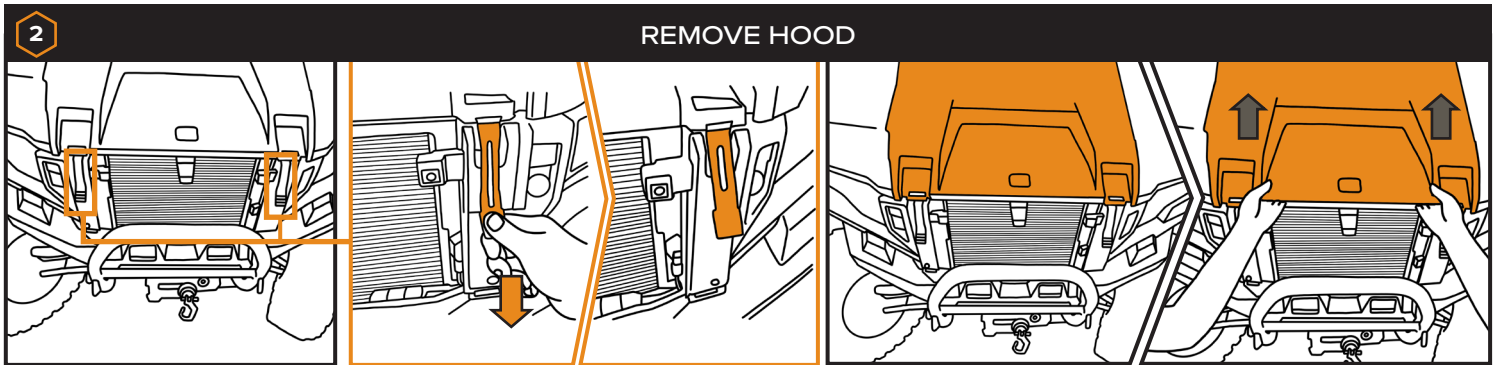
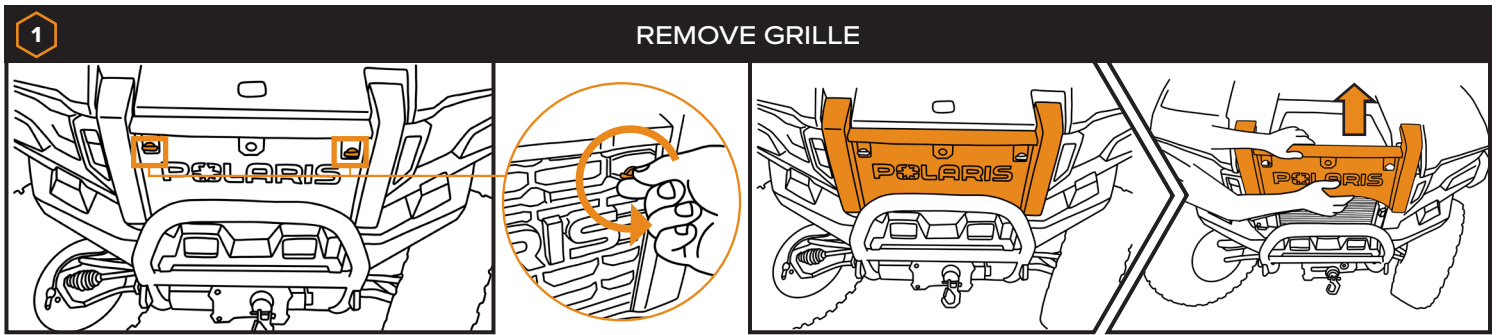
### PARTS INCLUDED:

- Controller (1x)
- Apex Light (2x)
- Horn (1x)
- Power Harness (1x)
- Turn Switch (1x)
- Horn/Hazards Switch (1x)
- Switch Extension Harness (2x)
- Rear Extension Harness (1x)
- Rear Harness (1x)
- License Plate Harness (1x)
- License Plate Illuminator (1x)
- Dash Indicator Harness (2x)
- Dielectric Grease (1x)
- Heat Shrink (1x)
- Roll Bar Adaptor (2x)
- Strap (2x)
- Wire Ties (20x)
- Double Sided Tape Strip (2x)
- M6 Flat Washer (2x)
- M5 x 0.8 x 6mm Allen Screw (4x)
- M6 x 1.0 x 10mm Allen Screw (4x)
- Adhesive Promoter Wipe (3x)
- Rubbing Alcohol Wipe (3x)

INSTALL VIDEO TUTORIAL

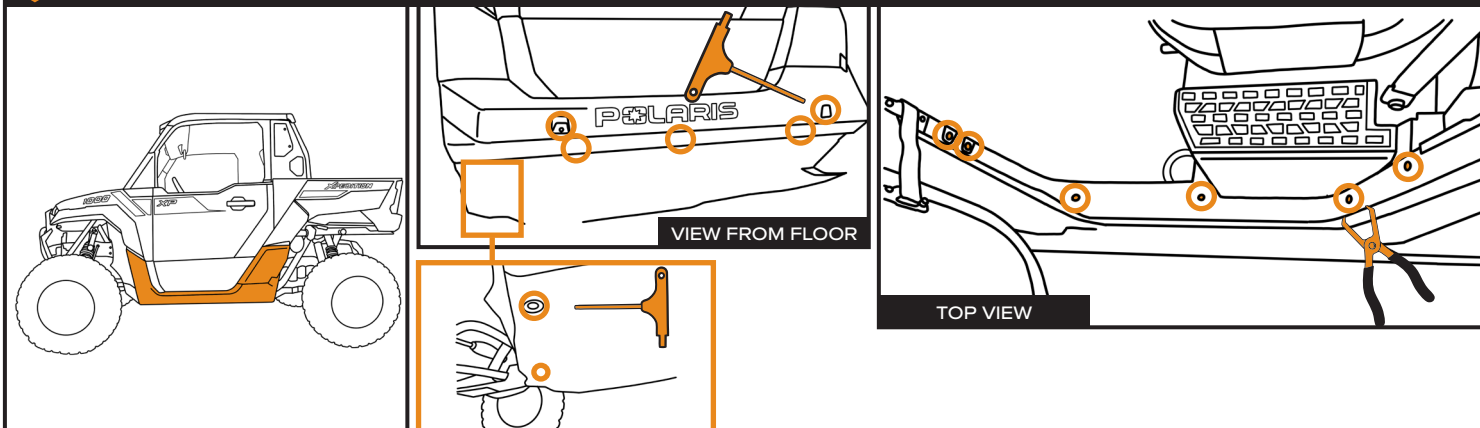
CALL US WITH ANY  
QUESTIONS: 855-617-2787





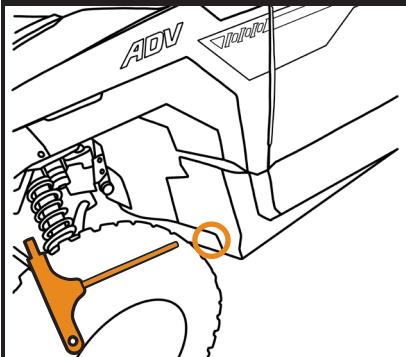
9

## PARTIALLY DETACH DRIVER SIDE ROCKER PANEL



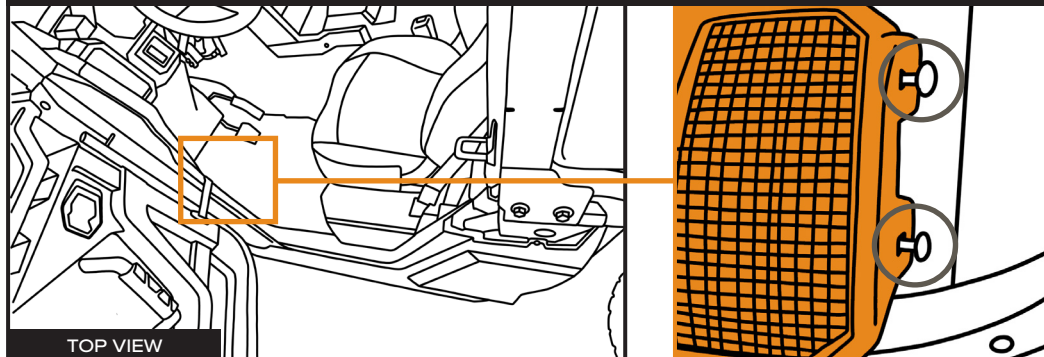
10

## REMOVE SCREW BY FRONT TIRE



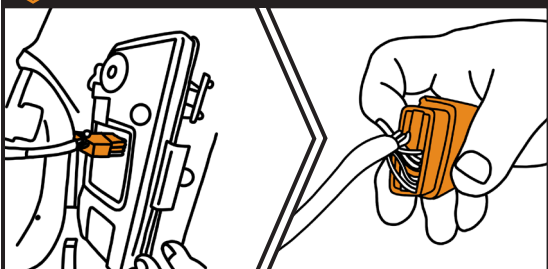
11

## REMOVE DEAD PEDAL SCREWS



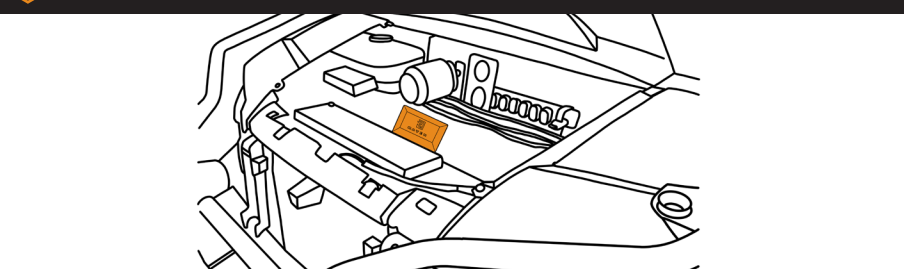
12

## UNPLUG INSTRUMENT CLUSTER



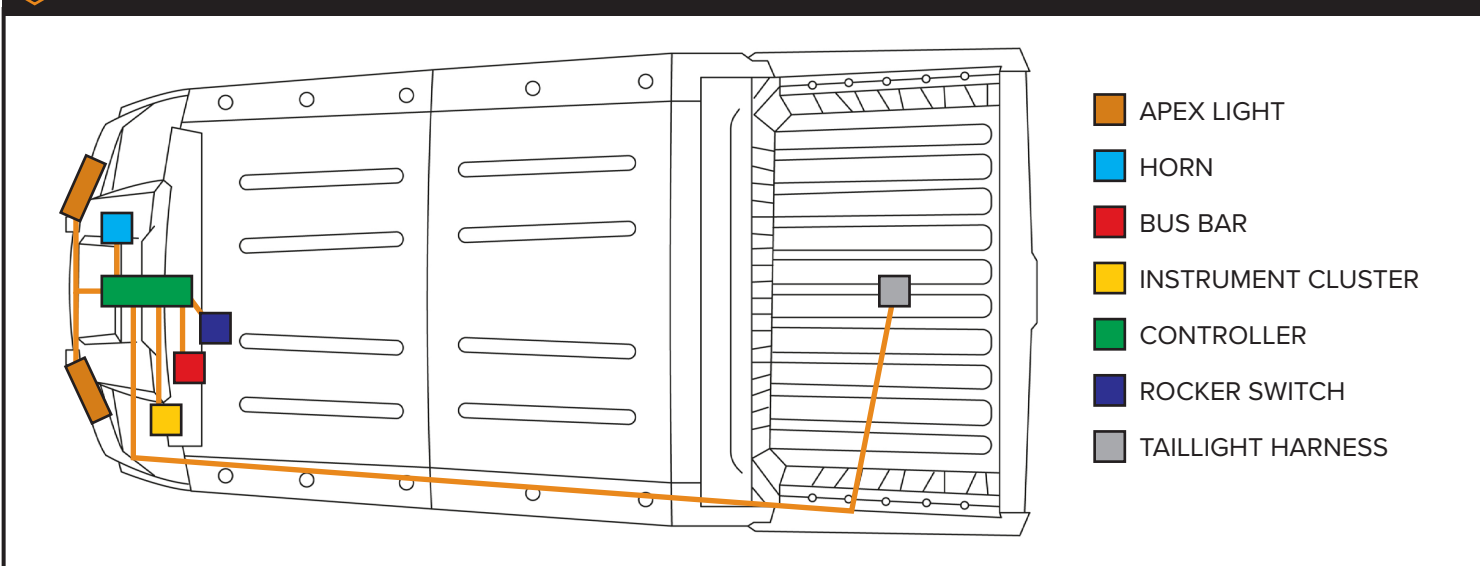
13

## STICK CONTROLLER UNDERNEATH HOOD AREA

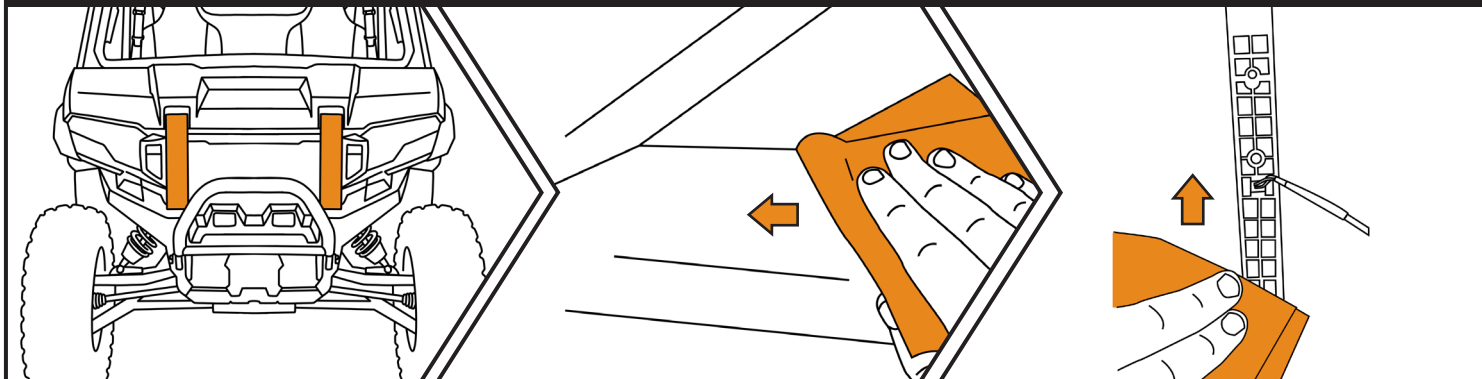


14

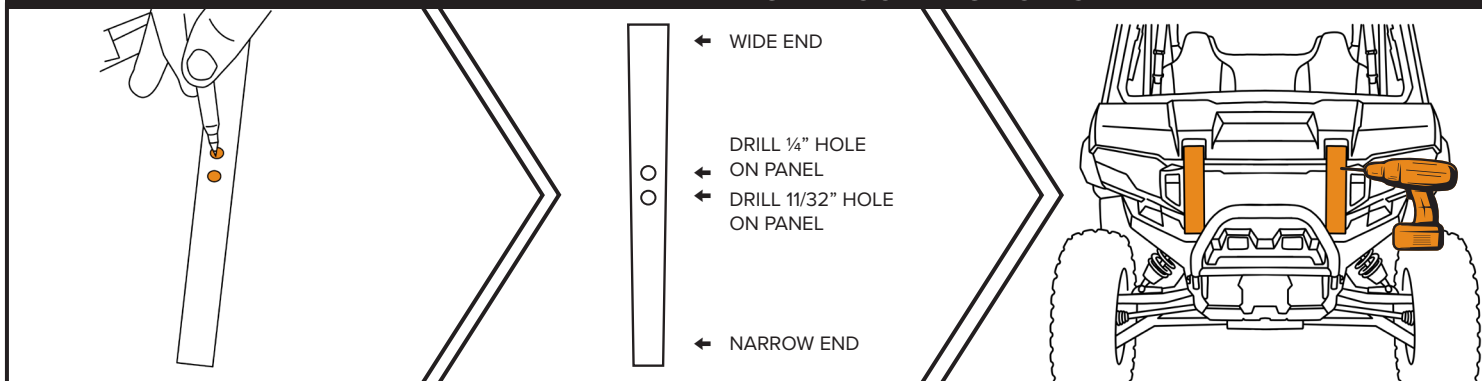
## RUN WIRING AS SEEN IN OVERVIEW



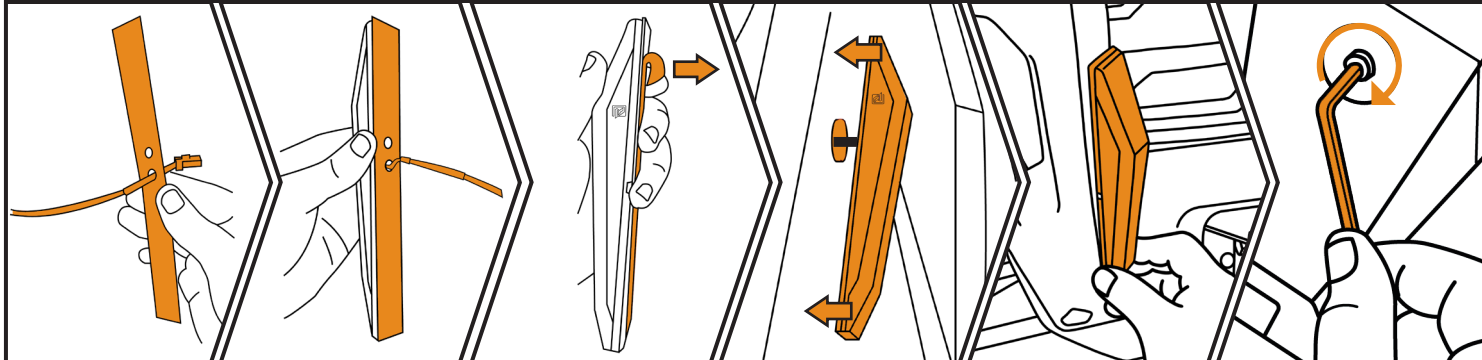
## PREP BUMPER AND APEX LIGHT SURFACES



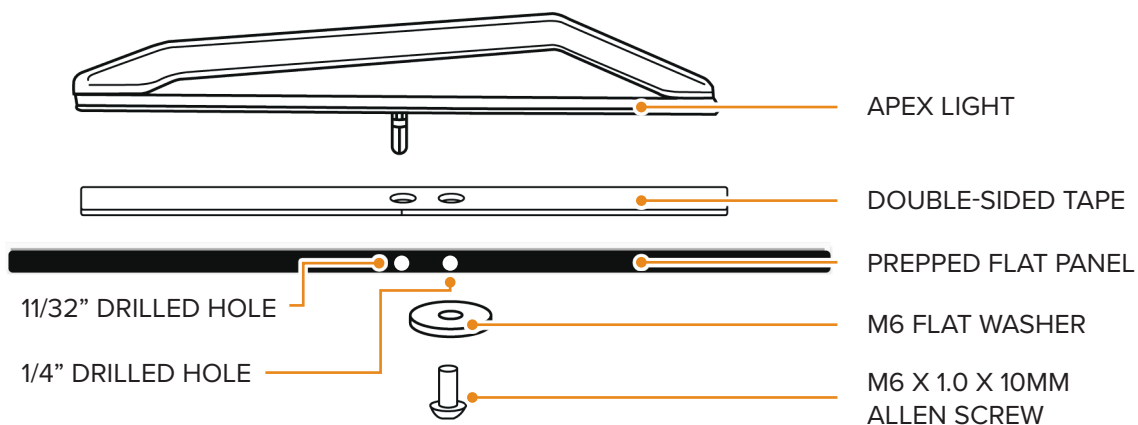
## MARK AND DRILL APEX LIGHT MOUNTING HOLES



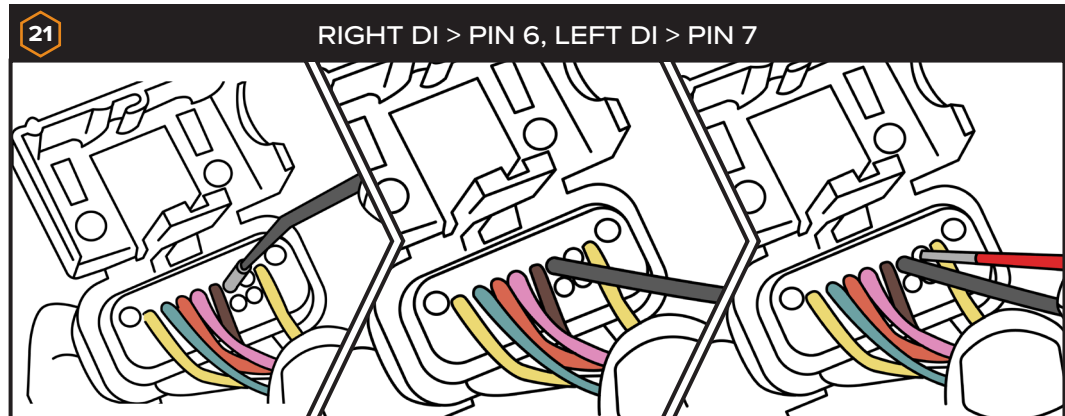
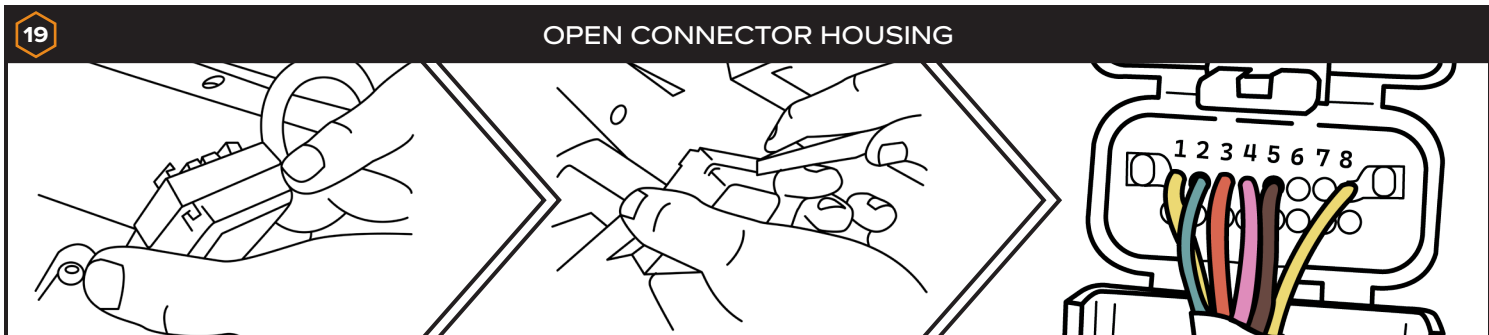
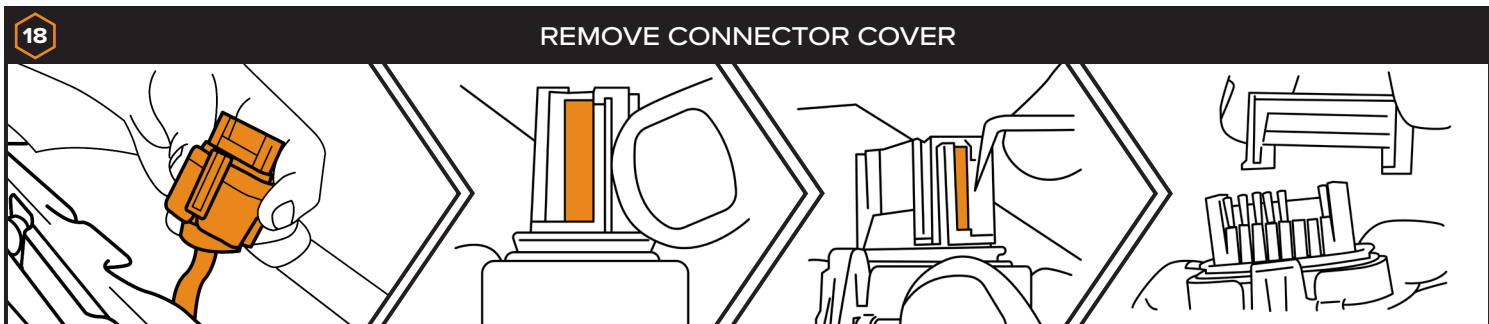
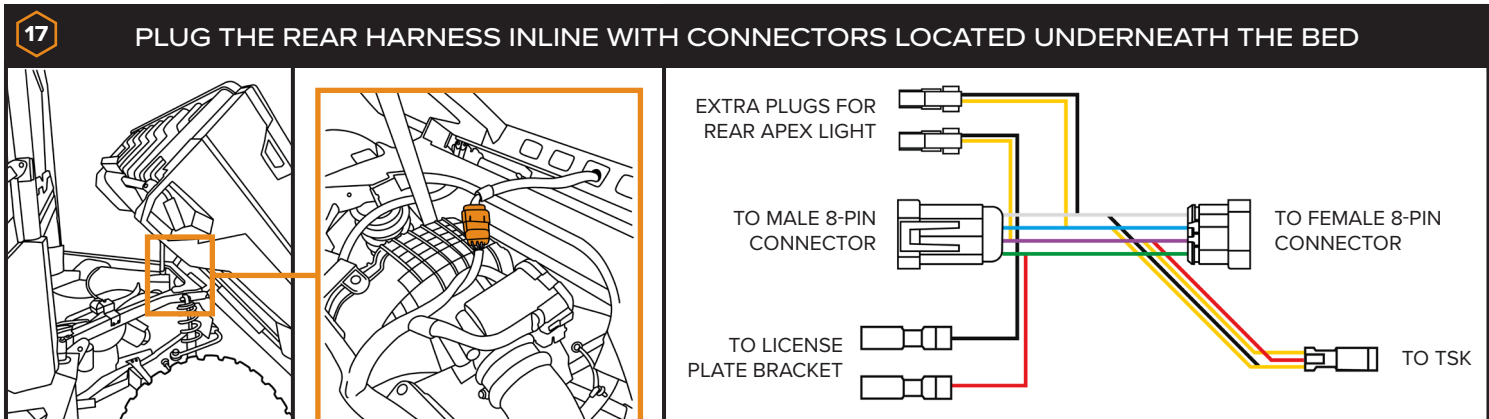
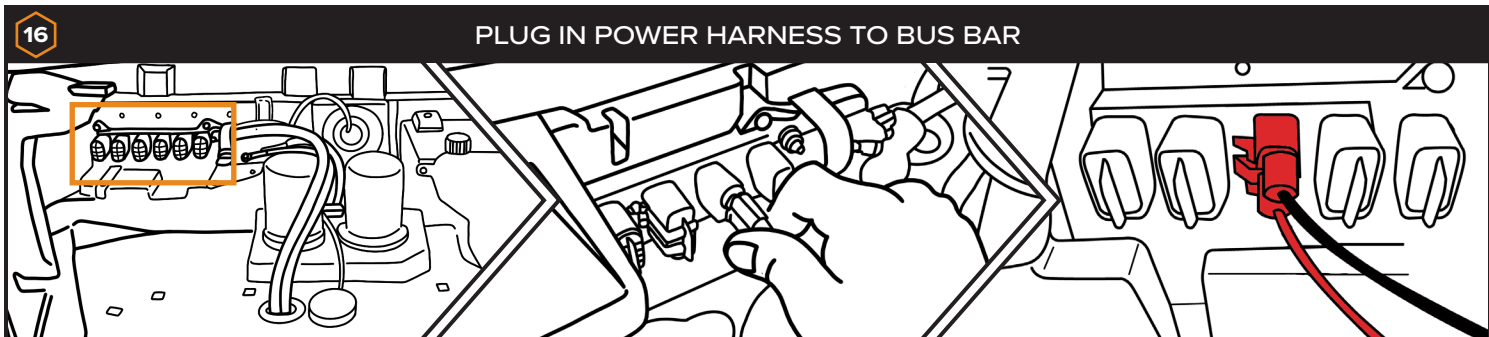
## INSTALL TAPE TO LIGHT BASE, STICK LIGHT TO BUMPER, TIGHTEN HARDWARE



## EXPLODED VIEW OF MOUNTING OPTION A

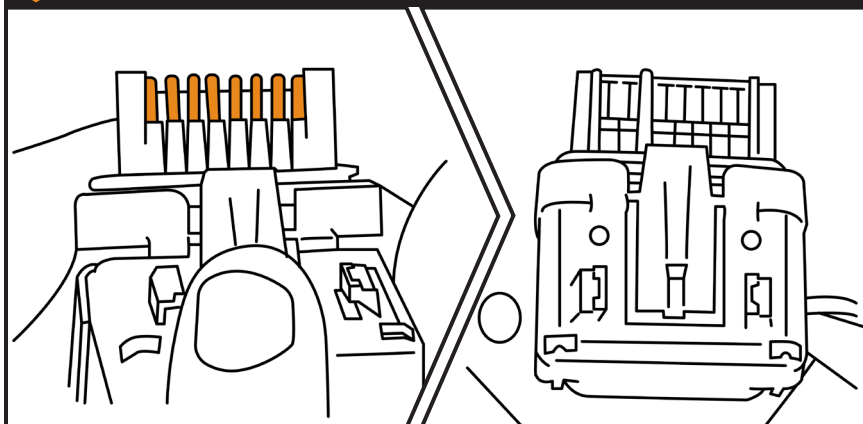






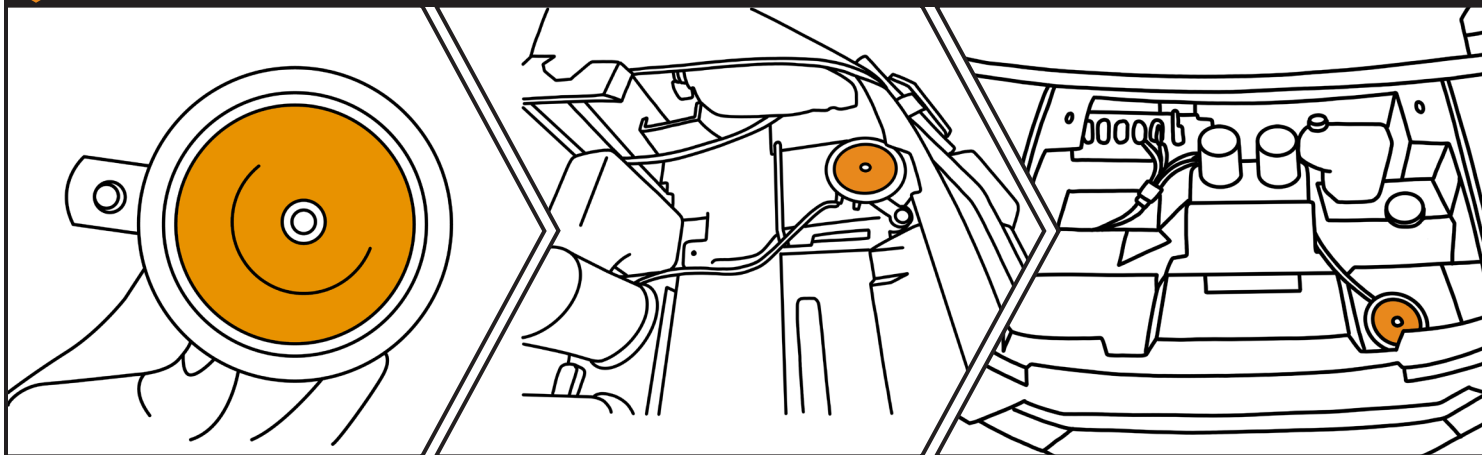
22

## ALIGN PINS ON CONNECTOR



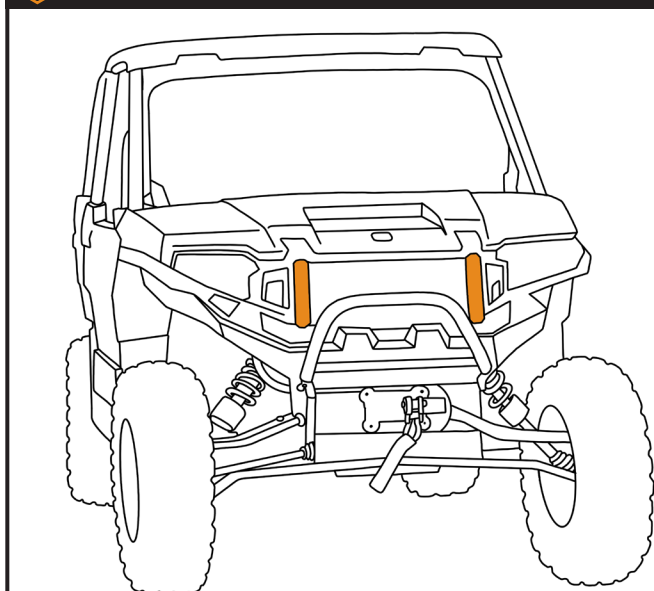
23

## INSTALL HORN REUSING SCREW UNDERNEATH HOOD

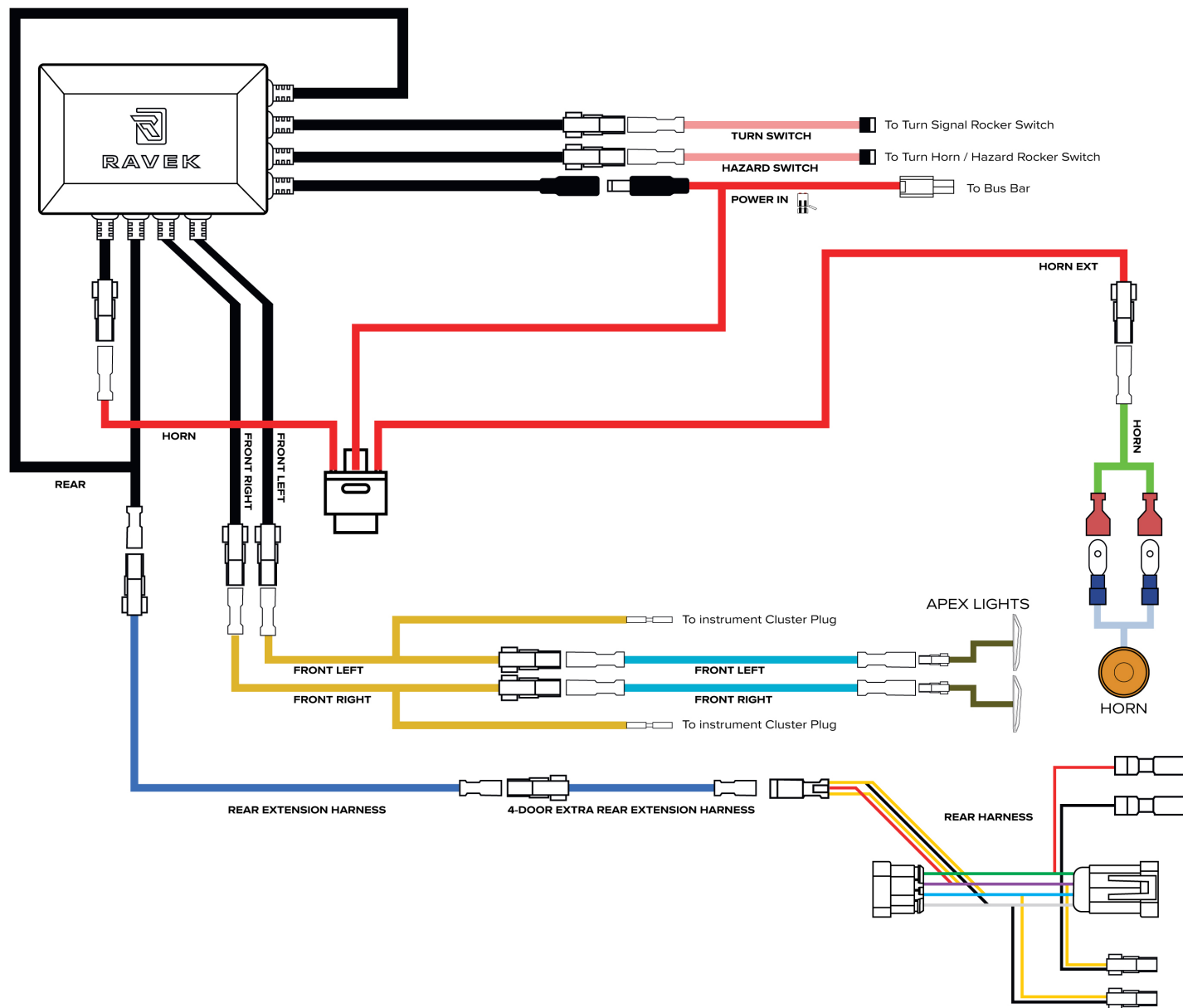


24

## TEST YOUR TSK &amp; TIDY UP YOUR MACHINE



- Running brake lights
- Running white lights
- Brake light w/ pulse effect
- Left turn signal:
  - Push Once: Activates a 20-second auto-cancel timer.
  - Push Twice: Extends the timer to 40 seconds.
  - Push Three Times: Sets the timer to 90 seconds.
- Left turn signal dash indicator
- Right turn signal:
  - Push Once: Activates a 20-second auto-cancel timer.
  - Push Twice: Extends the timer to 40 seconds.
  - Push Three Times: Sets the timer to 90 seconds.
- Right turn signal dash indicator
- Hazards
- Horn





## WHY RAVEK

Stock UTVs don't come with enough storage, lighting, comfort, and protection. That's why we started RAVEK.

We live to design, manufacture, and test innovative SxS upgrades that elevate the riding experience. Here's what you can expect from us:

- Durable products built to last (100% lifetime guarantee)
- UTV upgrades thoughtfully designed & tested by riders
- Outstanding installation support (videos & USA customer service)
- Constant flow of epic riding content (check out our social media)

We're confident your RAVEK product will earn its place on your machine. Please call or e-mail us if we can help.

- Harry & Ricky (Brothers & Owners)

## MESSAGE FROM THE DESIGNER

All UTVs come without turn signals, and even though you can ride them on the road, people need to make hand signals to indicate to other riders that you are making a turn! Not only is it tiring, but not safe!

That is why I created this kit: you can easily install a turn signal kit to your UTV, add some personality to your ride, and make your ride safe at any time of the day.