



RAVEK

POLARIS RZR XP 2024+

MOLLE STORAGE PANELS



INSTRUCTION MANUAL



RAVEK

POLARIS RZR XP 2024+

MOLLE STORAGE PANELS

Part #: 64-301

Fitment: POLARIS RZR XP 2024+

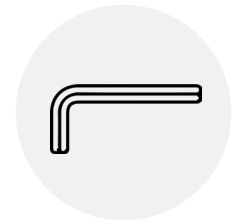
PARTS INCLUDED:

- LEFT MOLLE PANEL (1X)
- RIGHT MOLLE PANEL (1X)
- CLAMP (10X)
- M6 X 1.0 X 20MM SCREW (10X)
- M6 X 1.0 NYLOCK NUT (10X)

TOOLS NEEDED:



10mm Wrench



4mm Allen Wrench

INSTALL VIDEO TUTORIAL

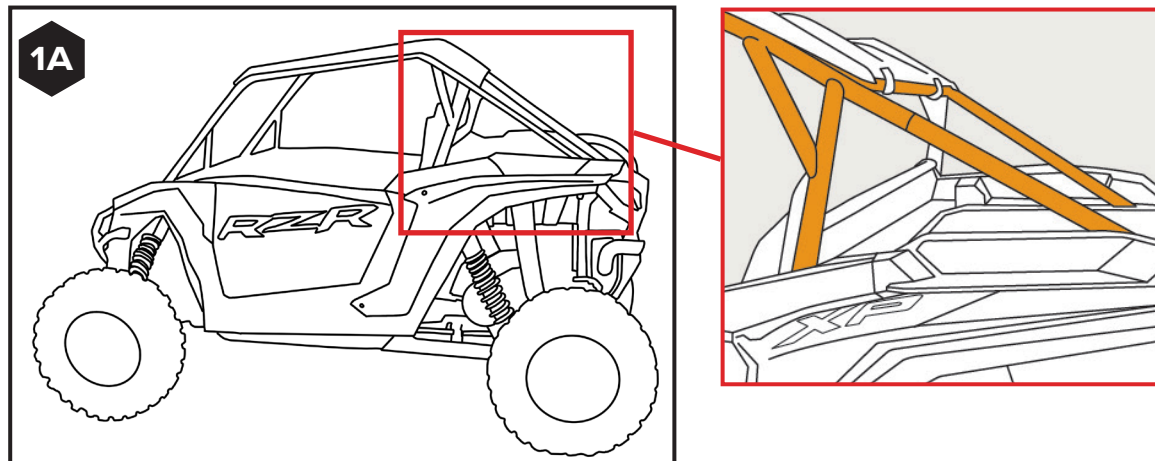
**DON'T LIKE INSTRUCTIONS?
VISIT OUR WEBSITE TO ACCESS
THE VIDEO TUTORIAL**



1

LOCATE THE REAR ROLL CAGE

Start by identifying the area on the rear roll cage where the MOLLE panels will be attached. [SEE FIGURE 1A]

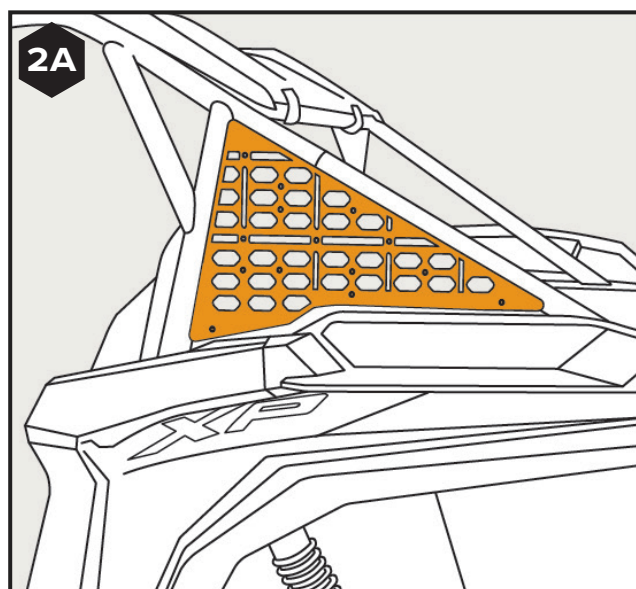


2

ATTACH THE LEFT MOLLE PANEL

- Place the left MOLLE Panel against the roll cage. [SEE FIGURE 2A]

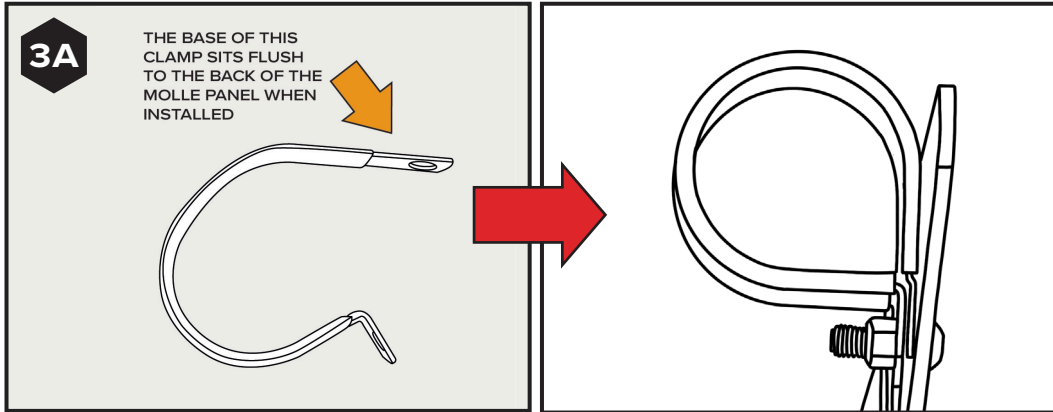
Note: The MOLLE Panels will only fit on the correct side of the RZR.



3

LOCATE THE CLAMPS

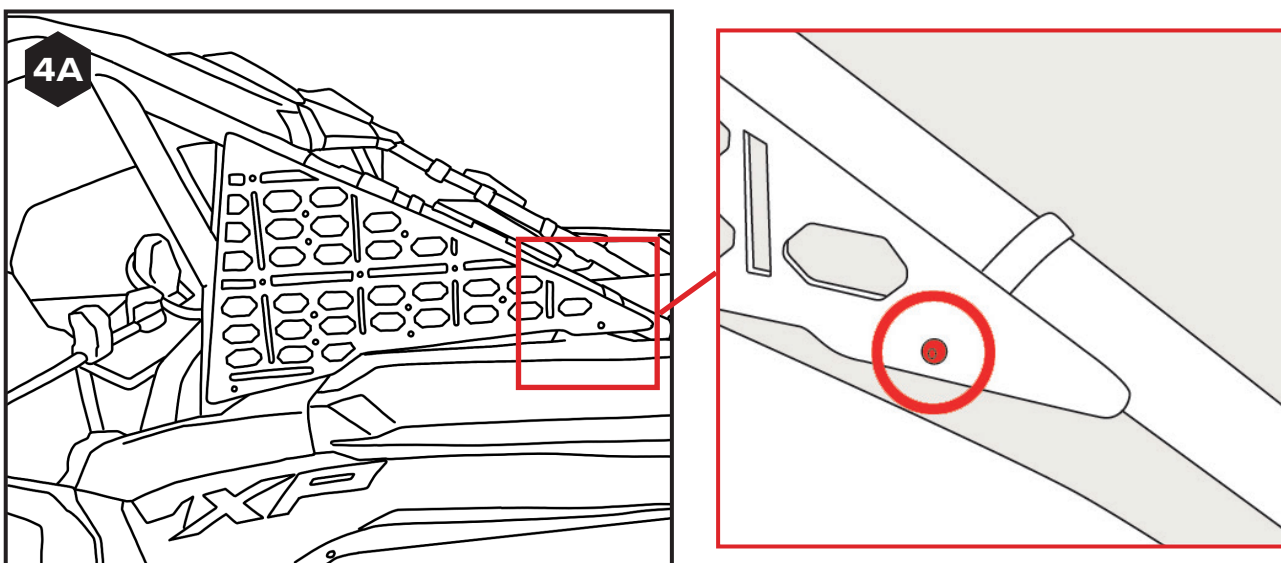
Find the clamps in your kit and identify the flat side of each clamp. This side will rest flat against the back of the MOLLE Storage Panel when you attach it to the roll bar. [SEE FIGURE 3A]

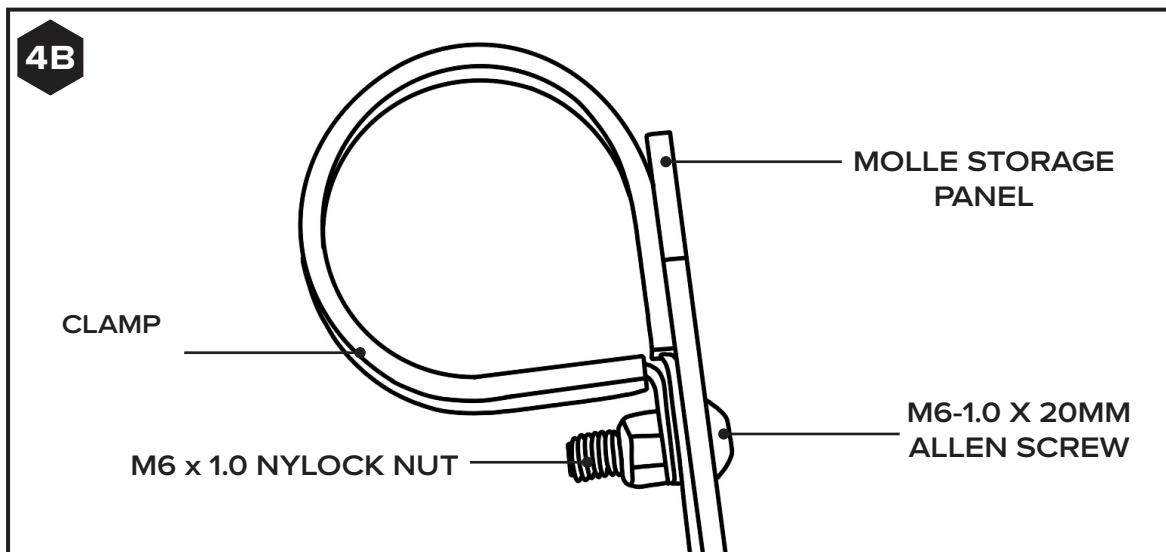


4

INSTALL THE LEFT SIDE PANEL

- Place the clamp on the rollbar.
- Use a screw from the kit and put it through the circled hole on the MOLLE Panel and the holes on the clamp. [SEE FIGURE 4A]
- Once the screw is through all the holes, add a nut to the back side of the screw. Tighten the nut slightly with your fingers. [SEE FIGURE 4B]



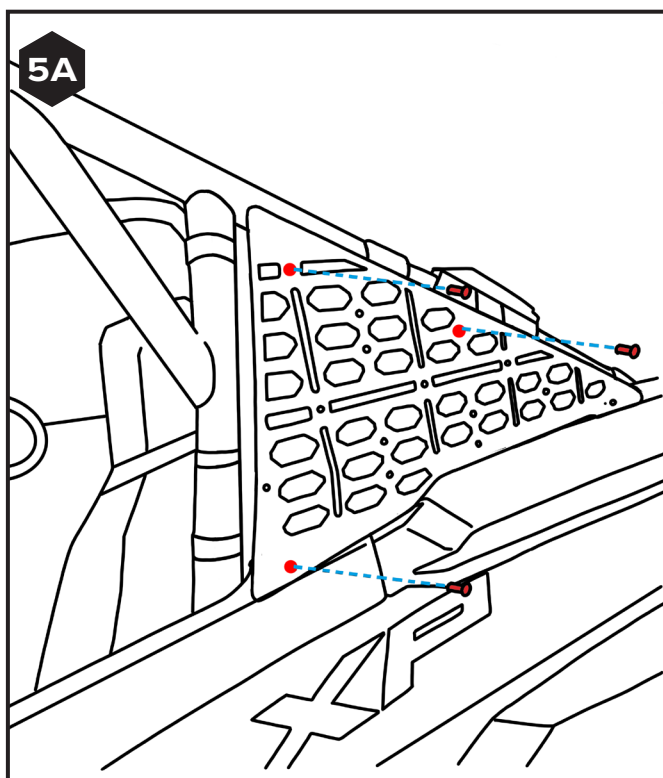


5

INSTALL THE 3 REMAINING MOLLE CLAMPS

Using three more clamps, screws, and nuts, mount the MOLLE storage panel to your roll cage. Get all the hardware finger-tighten before continuing.

NOTE: RAVEK MOLLE Storage Panels can be attached to your RZR with or without accessories, but you might need to adjust the mounting location.

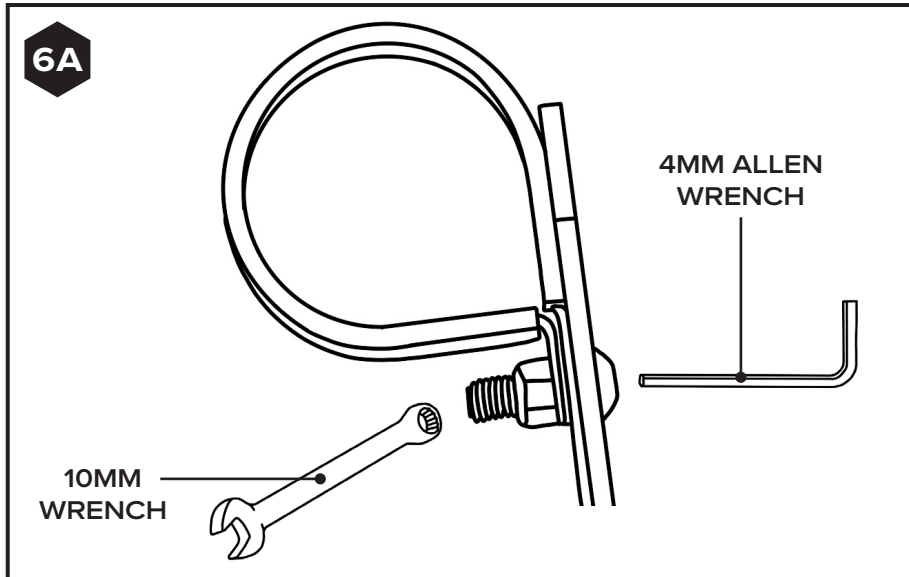


6

TIGHTEN THE HARDWARE

Use a 4mm Allen wrench to tighten the screws, and a 10mm wrench to hold the nuts on the back side of the clamps to secure it to the roll bar.

NOTE: It's essential to use at least four clamps to attach each MOLLE Storage Panel to the RZR. Two extra clamps are provided with each kit.

**7**

REPEAT FOR RIGHT SIDE PANEL

Repeat steps 2-6 on the right side of the UTV to mount your MOLLE Storage Panel securely to the roll cage of your RZR.



RAVEK

BUILT FOR MORE

WHY RAVEK

Stock UTVs don't come with enough storage, lighting, comfort, and protection. That's why we started RAVEK.

We live to design, manufacture, and test innovative SxS upgrades that elevate the riding experience. Here's what you can expect from us:

- Durable products built to last (100% lifetime guarantee)
- UTV upgrades thoughtfully designed & tested by riders
- Outstanding installation support (videos & USA customer service)
- Constant flow of epic riding content (check out our social media)

We're confident your RAVEK product will earn its place on your machine. Please call or e-mail us if we can help.

- Harry & Ricky (Brothers & Owners)

MESSAGE FROM THE DESIGNER

Polaris really nailed the design refresh with the 24+ RZR XP.

There is a balance of clean lines and aggressive angles that allows the owner to really take the UTV in one direction or the other with their mods. In designing the MOLLE Panels for the 24+ RZR XP, my goal was to create an "OEM+" piece that fit right in with the rest of the design. Once it's installed, it's hard to imagine the vehicle without them.



RAVEK
BUILT FOR MORE