



POLARIS RANGER

TAIL LIGHT

PLUG & PLAY MULTI-FUNCTION



INSTRUCTION MANUAL



RAVEK

POLARIS RANGER

PLUG & PLAY MULTI-FUNCTION TAIL LIGHT

Part #: 64-107

Fitment: POLARIS RANGER 570 2015+
POLARIS RANGER 900 2014-2019
POLARIS RANGER 1000 2017-2018

TOOLS NEEDED:



Side Cutter Pliers



Push Pin Pliers



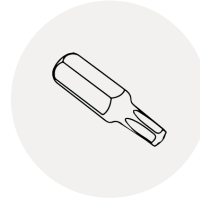
Heat Gun / Lighter



Ratchet



10mm Deep Well Socket



T-30 Torx

PARTS INCLUDED:

- UTV Multi-function Tail Light (1x)
- Main Harness (1x)
- Tail light Harness (2x)
- Tail light Extension Harness (1x)
- Work Light Harness (1x)
- Battery Positive Harness (1x)
- Battery Negative Harness (1x)
- Rocker Switch (1x)
- Rocker Switch Adapter (1x)
- Zip Tie (10x)
- Adhesive Promotor Wipe (2x)
- Rubbing Alcohol Wipe (2x)
- Heat Shrink (1x)
- Dielectric Grease (1x)

DON'T LIKE INSTRUCTIONS?

VISIT OUR WEBSITE
TO ACCESS THE
VIDEO TUTORIAL.



GENERAL NOTES

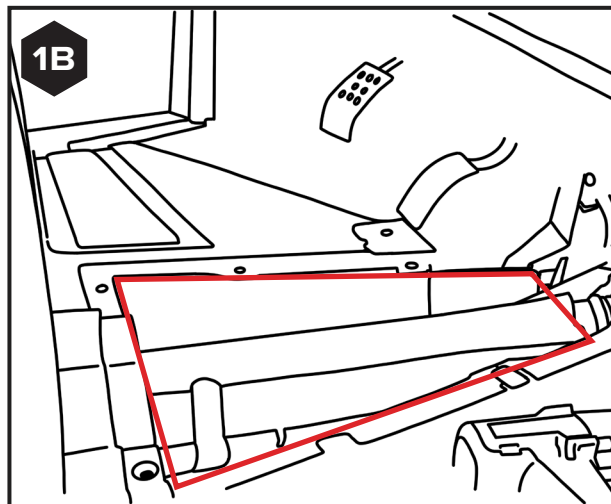
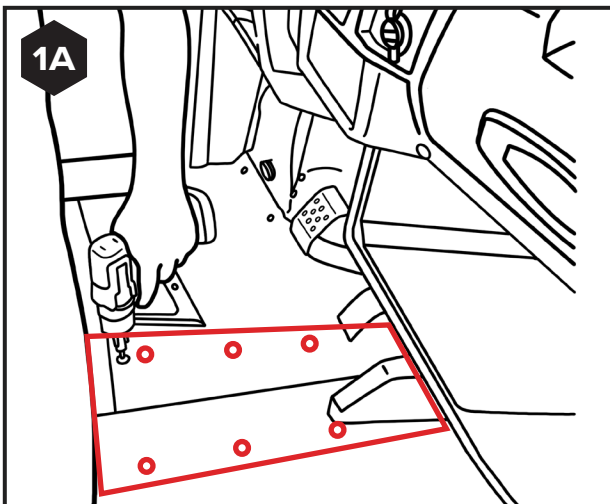
- Throughout this process, be sure to keep track of any screws or fasteners you remove as they will be re-installed in the same location.
- Make sure your vehicle is off and key is out of the ignition before starting.
- Dielectric grease is provided, and you can use it for added protection.

1

PREP THE VEHICLE

i

Using a T-30 TORX remove the six torx screws holding the center floor piece on your machine. Once fasteners are removed, lift the panel and remove it. [SEE FIGURES 1A & 1B]

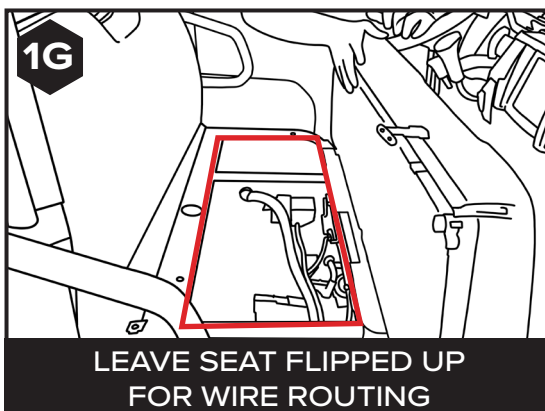
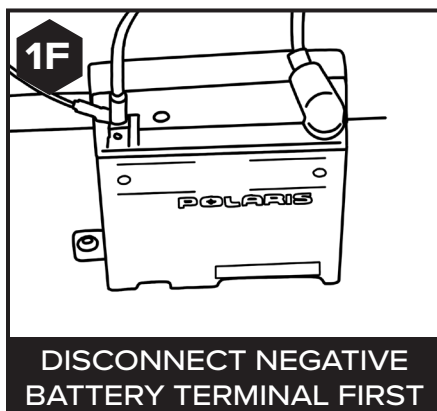
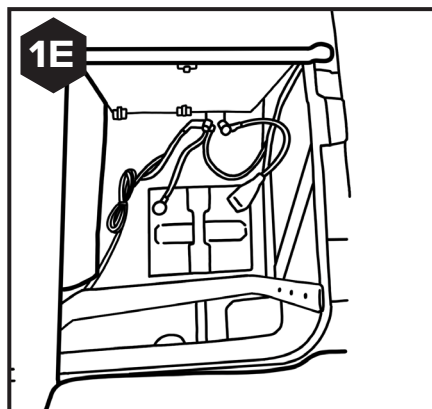
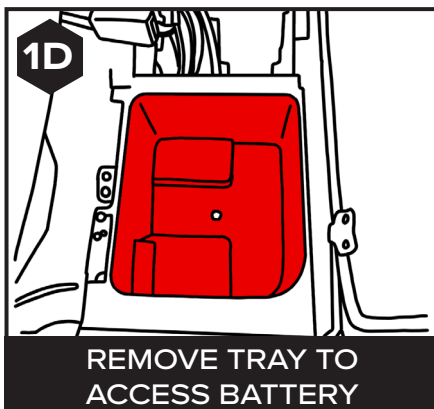
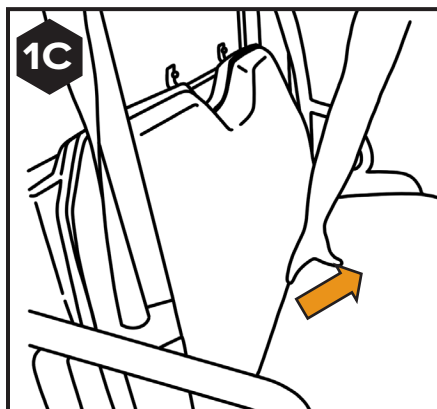




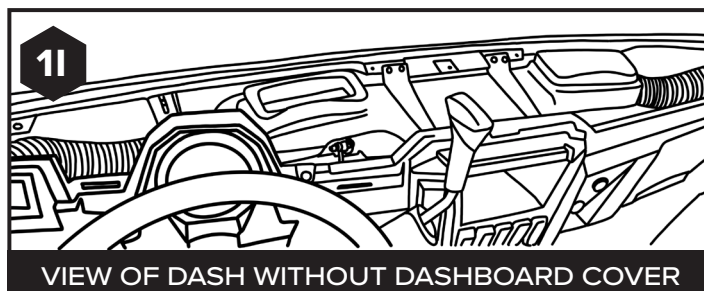
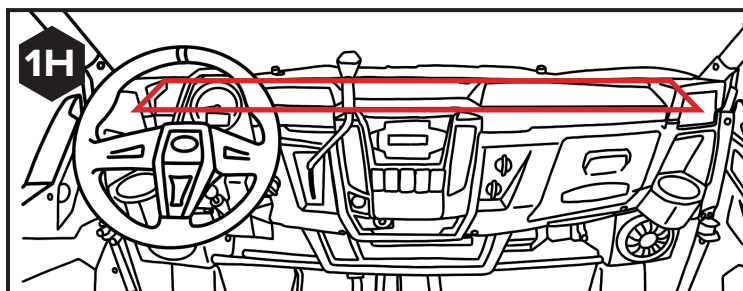
Flip your seats up and remove the storage tray to access your Ranger's battery. Disconnect your accessory battery terminals using a 10MM DEEP WELL SOCKET and a RATCHET. [SEE FIGURES 1C- 1G]

NOTE: Disconnect the negative battery terminal first to prevent arcing. Make sure cables don't touch each other or any metal surfaces when disconnected.

NOTE: The area below the seat will be crucial in a future step when routing wires to the rear of the machine.

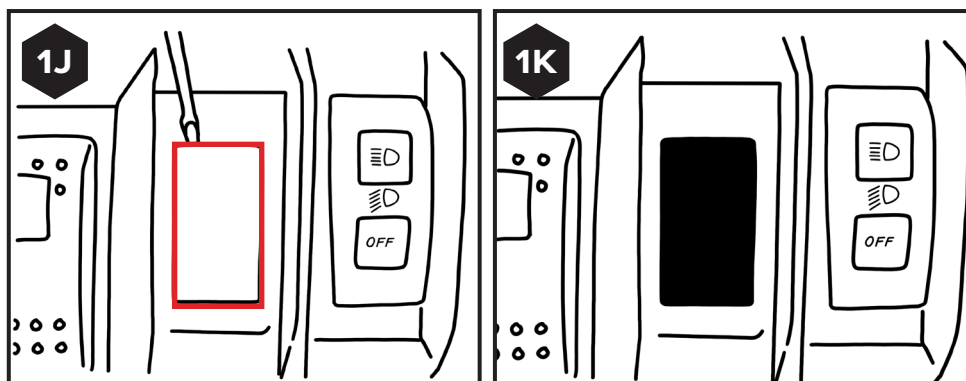


Using PUSH PIN PLIERS remove your dashboard cover. [SEE FIGURES 1H & 1I]



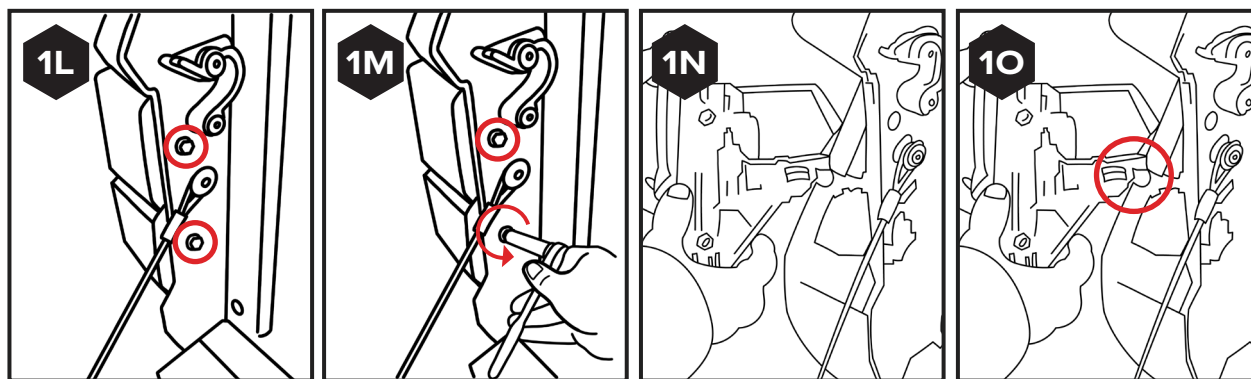
iv

Remove one rocker switch knock out from the rocker switch panel by gently prying them off using a **SMALL FLATHEAD SCREWDRIVER**. You'll be installing the Turn Signal and Horn/Hazards rocker switches in those slots in a future step. [SEE FIGURES 1J & 1K]



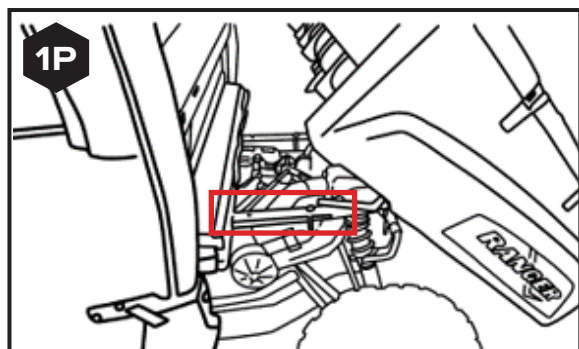
v

Remove the taillights using a **10MM SOCKET and RATCHET** and set aside. [SEE FIGURES 1L – 1O]



vi

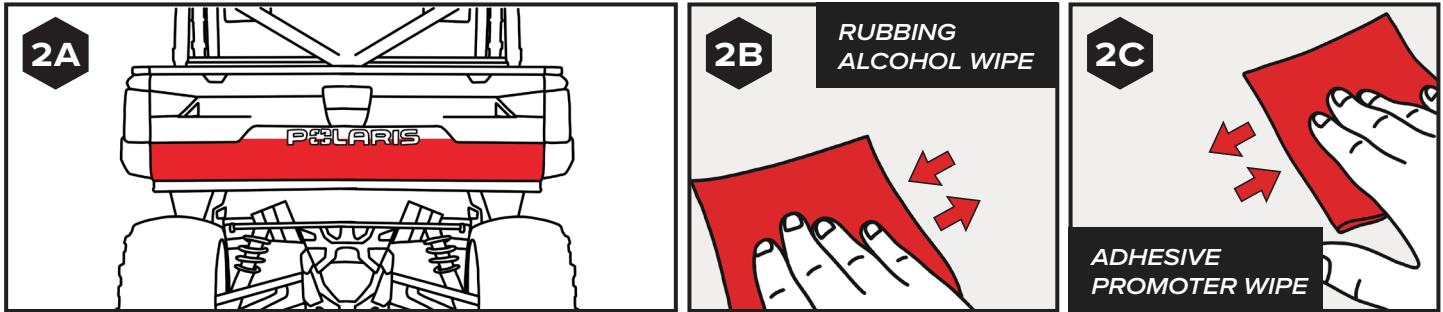
Dump your bed to gain access to the Ranger's frame rail. [SEE FIGURE 1P]



i

Wipe your lower tailgate half using one of the rubbing alcohol wipes provided. Let dry.

Wipe the same surface with one of the adhesive promoter wipes provided. Let dry. [SEE FIGURES 2A-2C]



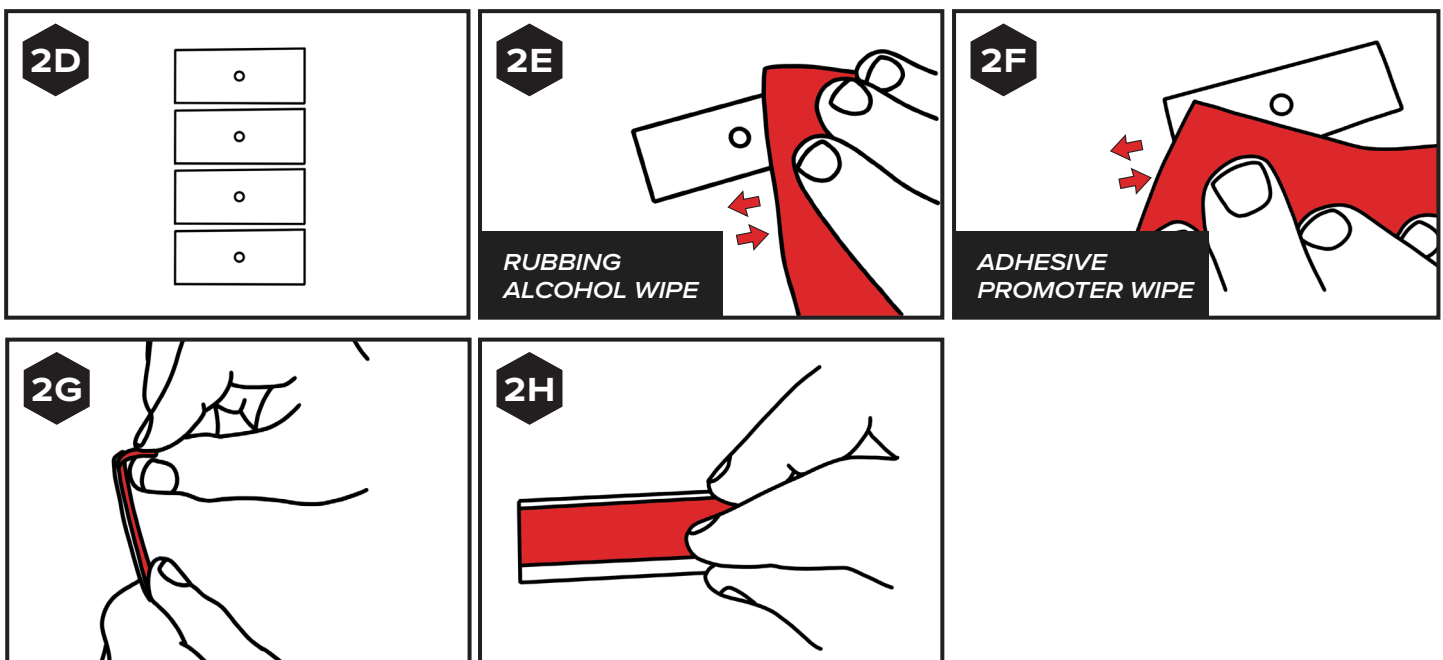
ii

Locate the four mounting clips provided in the kit. [SEE FIGURE 2D]

Clean the back surface of the mounting clips using a rubbing alcohol wipe. Let dry. [SEE FIGURE 2E]

Wipe down the surface of the mounting clips with the adhesive promoter wipe. Let dry. [SEE FIGURE 2F]

Place the double sided tape on to the back surface of the mounting clips and place them on the back of the light. [SEE FIGURE 2D - 2I]



2I

SPACE OUT CLIPS EVENLY

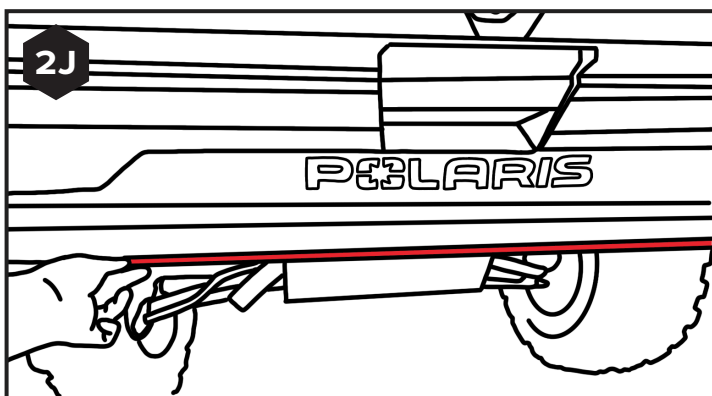


iii

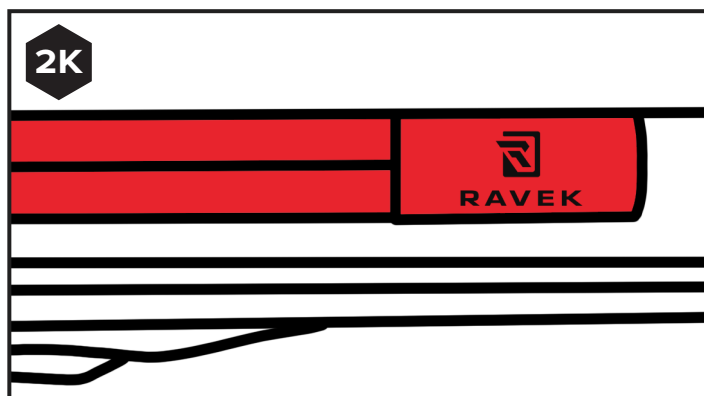
Peel off the double sided tape protective film and stick the light to the clean tailgate surface. [SEE FIGURE 2J]

NOTE: Install the light so the RAVEK logos on the end caps are right side up. [SEE FIGURE 2K]

2J



2K



3

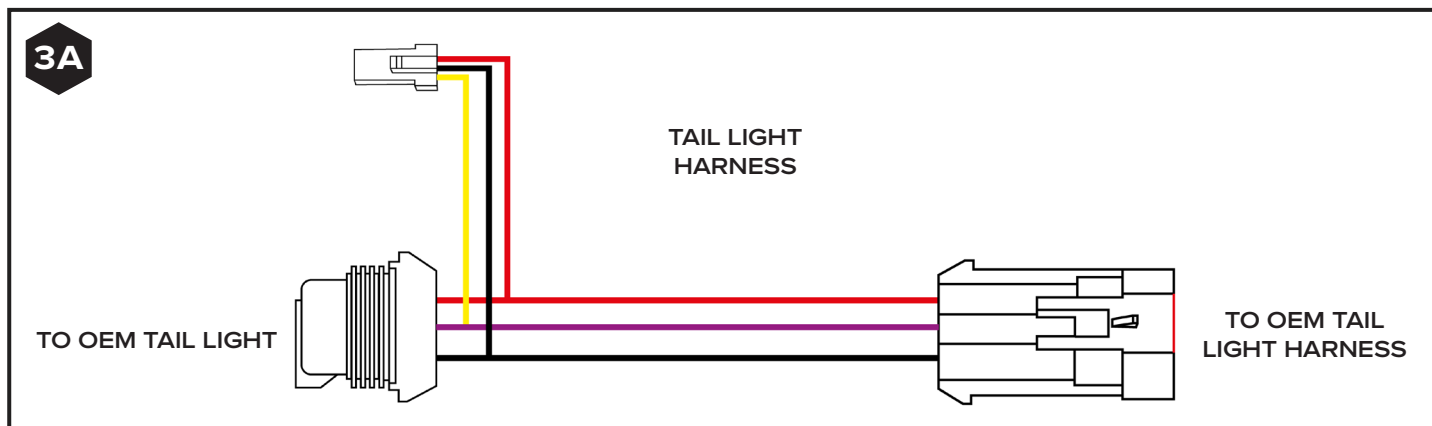
MAKE YOUR CONNECTIONS

i

Grab both of your Tail Light Harnesses and plug them in line to your OEM tail light and harness. [SEE FIGURE 3A]

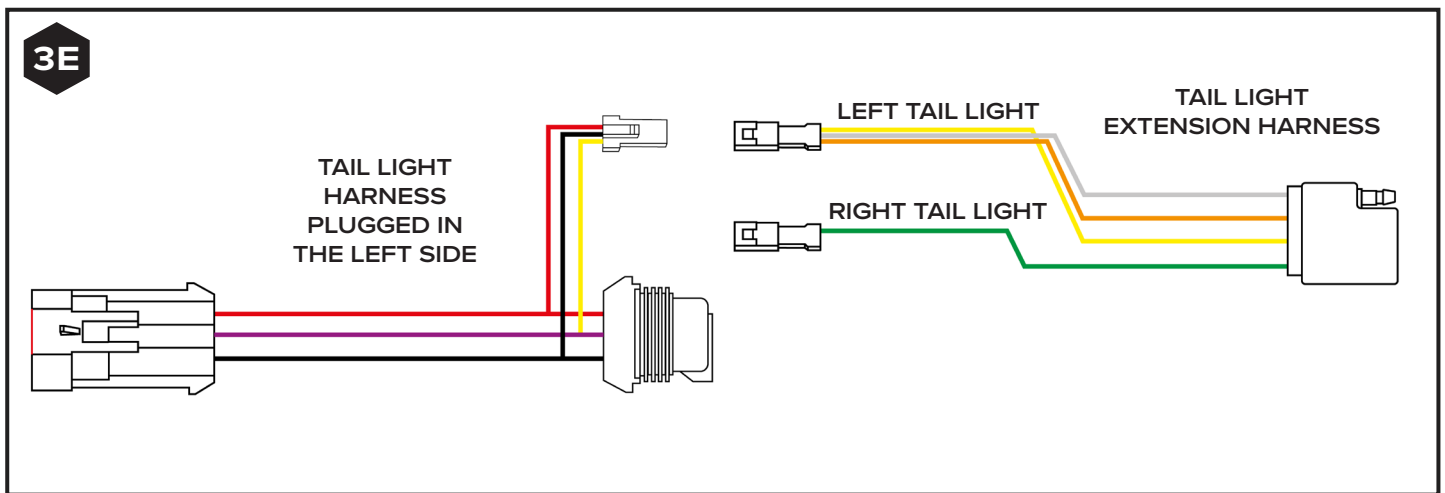
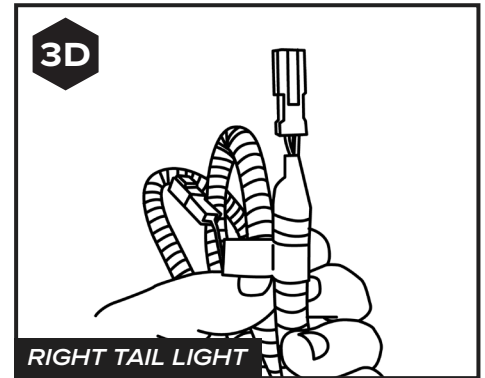
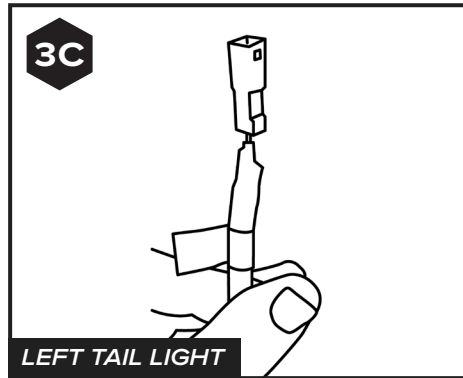
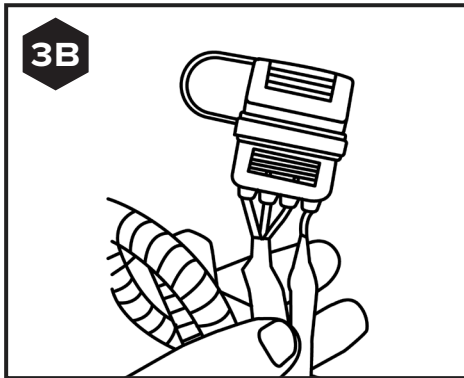
NOTE: If additional accessories are plugged into the tail light already, connect the Multi-function Tail Light Harness closest to the OEM tail light.

3A



ii

Grab your Tail Light Extension Harness and plug in each labeled connector to the corresponding Tail Light Harness, routing the Tail Light Extension Harness underneath the tailgate. [SEE FIGURES 3B-3E AND DIAGRAM A]



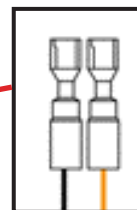
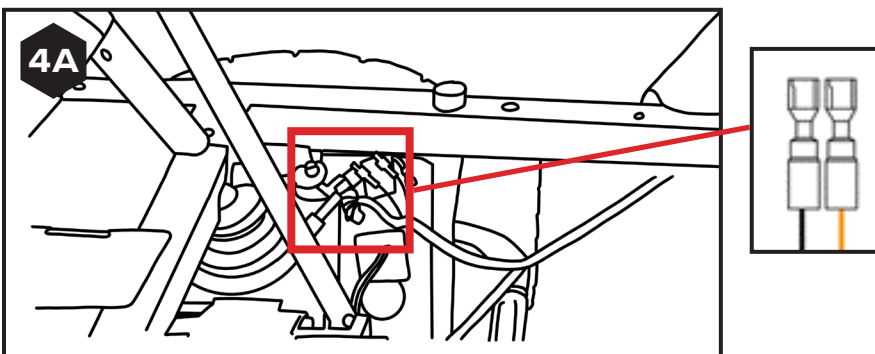
4

MAKE YOUR REVERSE LIGHT CONNECTIONS

i

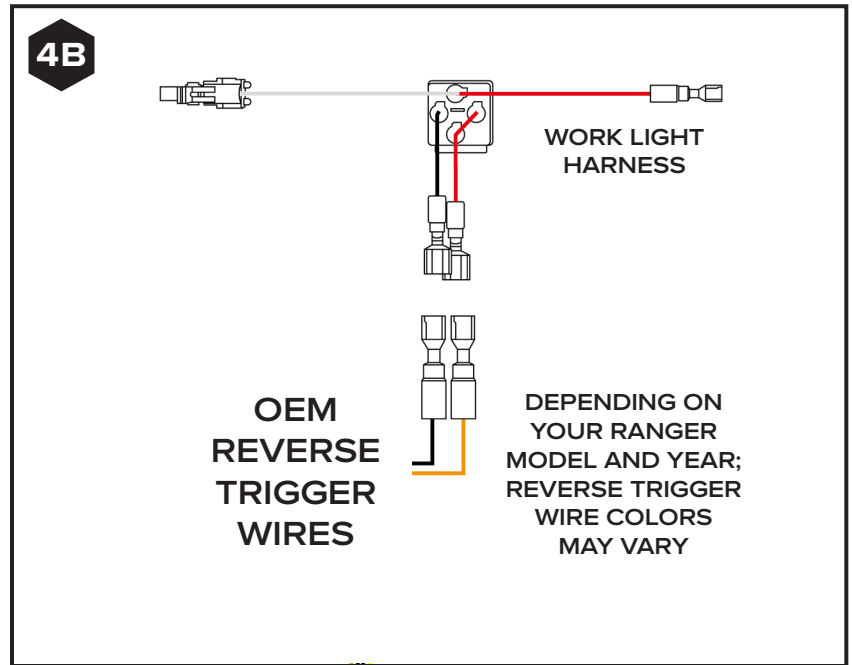
Locate two unplugged spade connectors on your Ranger, right on top of the engine compartment, as these will be your reverse trigger wires for your light. [SEE FIGURE 4A]

NOTE: Identify which wire is power and ground on your specific vehicle (normally the power wire is red and ground wire black or brown)



ii

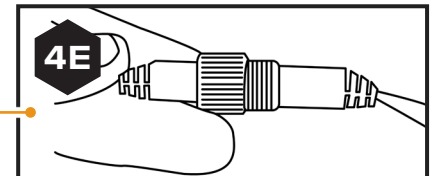
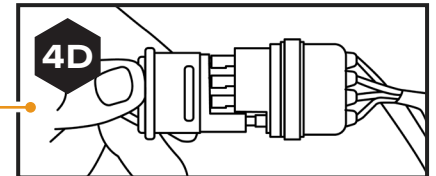
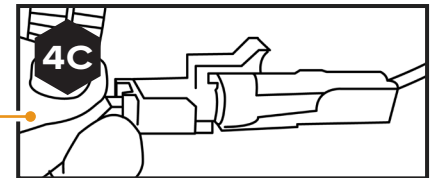
Plug in your Work Light Harness to your OEM Reverse trigger wires. This requires the red spade connector from the Work Light Harness to go to power and the black wire to ground. [SEE FIGURE 4B]



iii

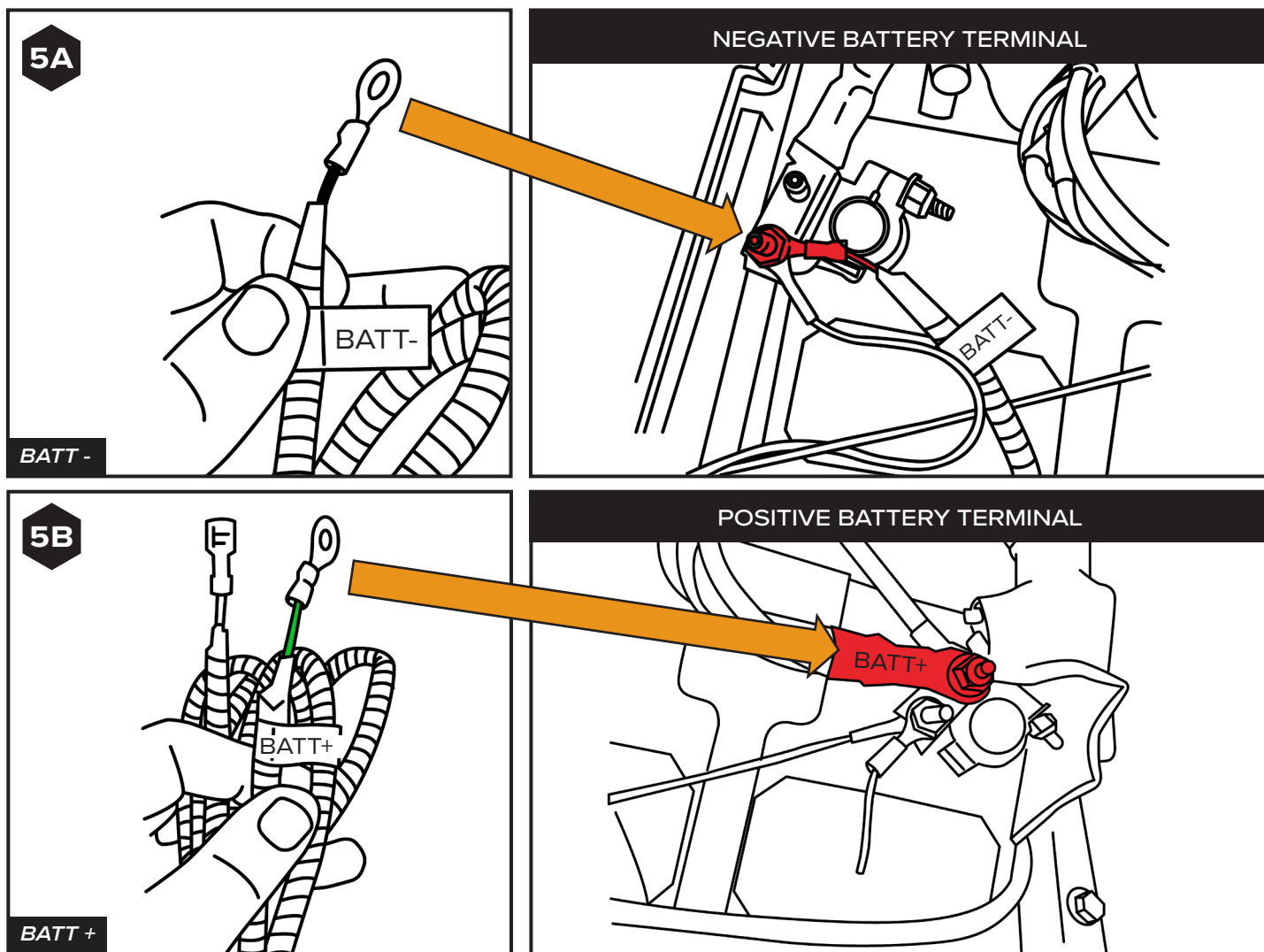
Once you've plugged in your Work Light Harness to the OEM reverse trigger wires, set your Main Harness (harness with the controller box) in the engine compartment and make the following connections [SEE FIGURES 4C-4E]:

- Plug in the 1-pin connector coming out the white wire on the Main Harness to the Work Light Harness (harness with relay)
- Plug in the trailer connector coming out the Main Harness to the connector on the Tail Light Extension Harness on the middle of the Ranger
- Plug in the 4 pin connector coming out the Main Harness to the connector on the light connector on the light to the left side of the Ranger



i

Grab both your Battery Negative and Battery Positive Harnesses. Hook the ring terminal to the corresponding accessory battery terminal and re-install 10mm nut on positive and negative battery terminals. [SEE FIGURES 5A & 5B]

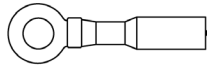


ii

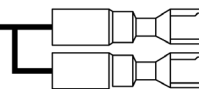
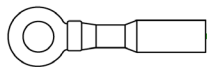
Grab the red spade connector on the Work Light Harness, the two black spade connectors from the Battery Negative Harness, and the green spade connector from the Battery Positive Harness, and bundle all four spade connectors together.

Route all four spades to the open rocker switch location referenced in step 1.i. [SEE FIGURES 5C-5G AND DIAGRAM A]

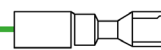
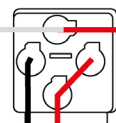
NOTE: Be sure to keep all wiring away from hot or moving components.

5CTO BATTERY
NEGATIVE

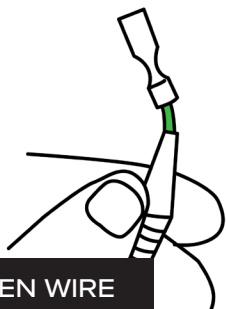
BATTERY NEGATIVE HARNESS

TO ROCKER
SWITCHTO BATTERY
POSITIVE

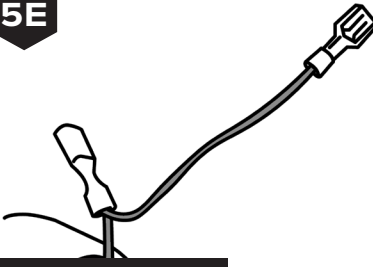
BATTERY POSITIVE HARNESS

TO ROCKER
SWITCHTO MAIN
HARNESS

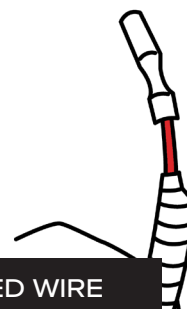
TO OEM REVERSE TRIGGER WIRES

5D

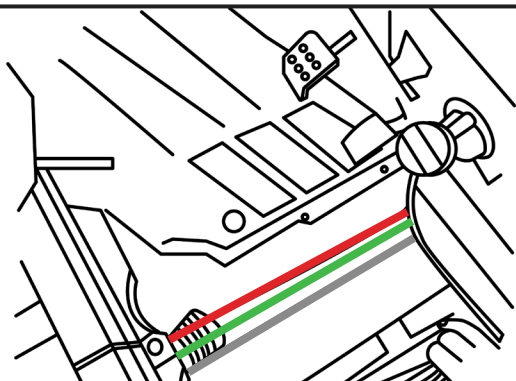
GREEN WIRE

5E

BLACK WIRE

5F

RED WIRE

5G

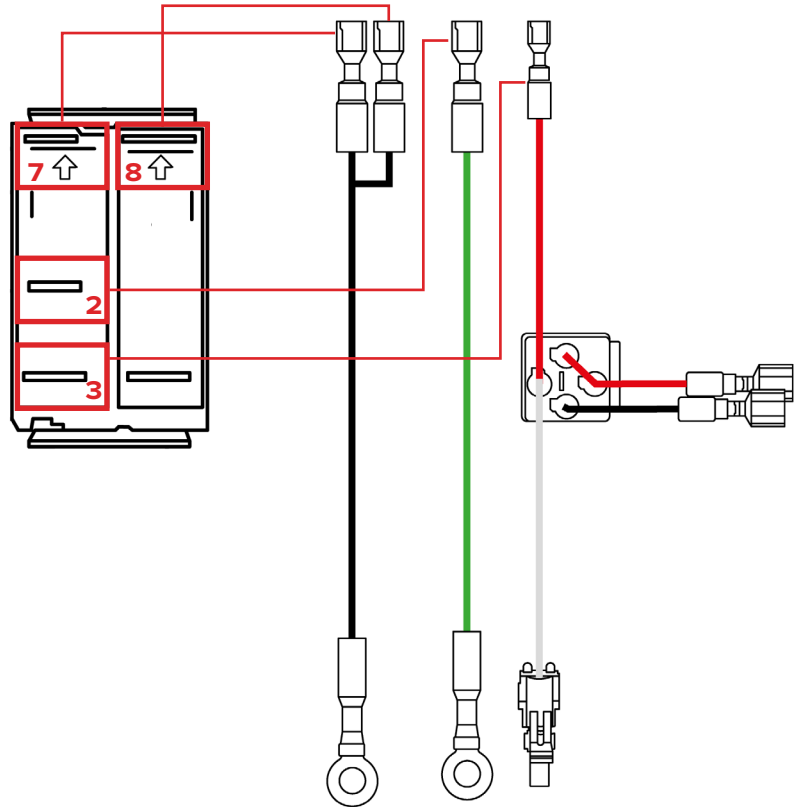
WIRES BEING ROUTED TO THE SWITCH PANEL



Reference diagram below to connect each spade connector to the appropriate spade terminal on the backside of the rocker switch.

5H

- Plug in main ground spade connector to PIN #7 (BLACK WIRE)
- Plug in ground jumper spade connector to PIN #8 (BLACK WIRE)
- Plug in power (green spade connector) to PIN #2 (GREEN WIRE)
- Plug in the red spade connector on the Work Light Harness to PIN #3 (RED WIRE)



Now is time to confirm light works as designed:

- Red Running Light
- Brake Light
- Reverse
- White Work Light (with vehicle on or off)

NOTE: If you have a turn signal kit hooked up to your Ranger; verify the turn signal feature built in to the light.

i

Go over all your wiring and secure it to the different frame tubes and OEM harnesses. [REFERENCE DIAGRAM A FOR OVERVIEW OF WIRING]

NOTE: Stay away from hot or moving components.

ii

Once all of your wiring is secured with the help of the zip ties, cut all the excess zip ties using side cutter pliers.

iii

With your wiring neatly routed and secured to the Ranger, reverse steps 1.i. - 1.vi. to reinstall the different Ranger components.



WHY RAVEK

Stock UTVs don't come with enough storage, lighting, comfort, and protection. That's why we started RAVEK.

We live to design, manufacture, and test innovative SxS upgrades that elevate the riding experience. Here's what you can expect from us:

- Durable products built to last (100% lifetime guarantee)
- UTV upgrades thoughtfully designed & tested by riders
- Outstanding installation support (videos & USA customer service)
- Constant flow of epic riding content (check out our social media)

We're confident your RAVEK product will earn its place on your machine. Please call or e-mail us if we can help.

- Harry & Ricky (Brothers & Owners)

MESSAGE FROM THE DESIGNER

When I designed the UTV Multi-function Tail Light, I thought about all the aspects a UTV rider needs: added visibility, sleek look, and easy installation. This product checks all the boxes, which is why I love it. It makes your machine look meaner and makes you and your ride crew safe at night on the trails.



RAVEK
BUILT FOR MORE