



CAN-AM DEFENDER 2016+

## ***TAIL LIGHT***

PLUG & PLAY MULTI-FUNCTION



# INSTRUCTION MANUAL



# RAVEK

CAN-AM DEFENDER 2016+

## **PLUG & PLAY MULTI-FUNCTION TAIL LIGHT**

Part #: 65-103

Fitment: CAN-AM DEFENDER 2016+

### **TOOLS NEEDED:**



*Side Cutter Pliers*



*Push Pin Pliers*



*Lighter / Heat Gun*



*Ratchet*



*10mm Deep Well Socket*

### **PARTS INCLUDED:**

- UTV Multi-function Tail Light (1x)
- Main Harness (1x)
- Tail light Harness (2x)
- Tail light Extension Harness (1x)
- Work Light Harness (1x)
- Battery Positive Harness (1x)
- Battery Negative Harness (1x)
- Rocker Switch (1x)
- Zip Tie (10x)
- Adhesive Promotor Wipe (2x)
- Rubbing Alcohol Wipe (2x)
- Heat Shrink (1x)
- Dielectric Grease (1x)

DON'T LIKE INSTRUCTIONS?

VISIT OUR WEBSITE  
TO ACCESS THE  
VIDEO TUTORIAL.



### GENERAL NOTES

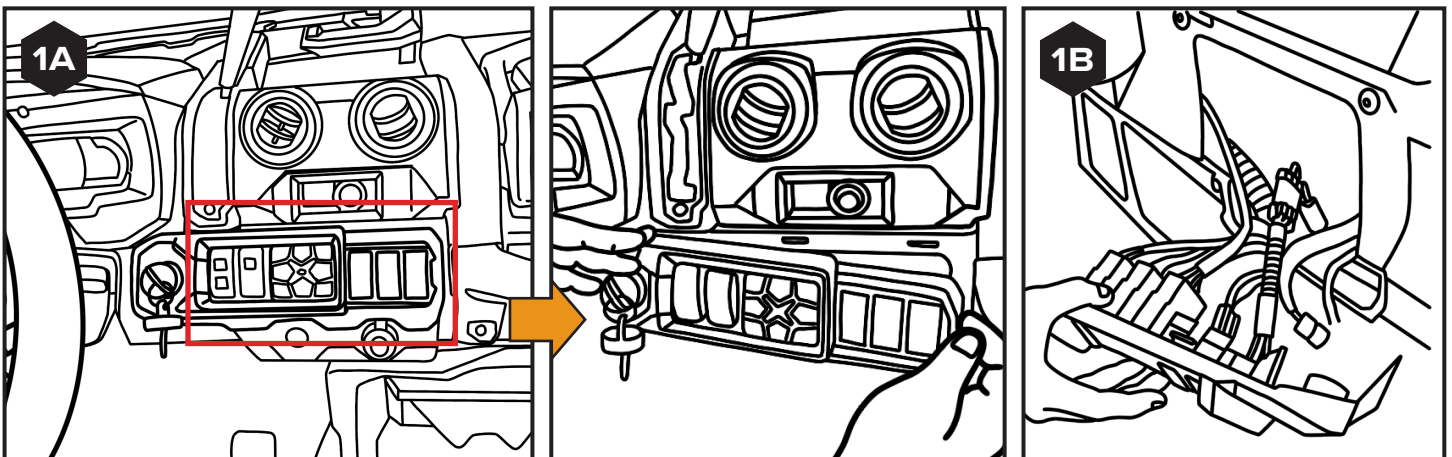
- Throughout this process, be sure to keep track of any screws or fasteners you remove as they will be re-installed in the same location.
- Dielectric grease is provided, and you can use it for added protection.

1

## PREP THE VEHICLE

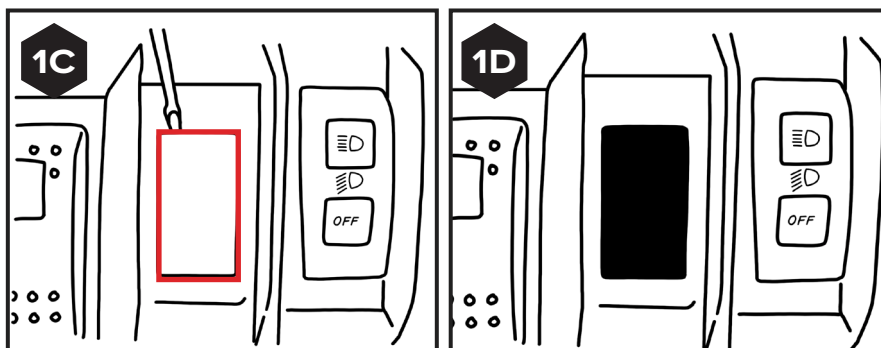
i

Locate your switch panel and open it by carefully prying the bottom edge free and releasing the clips. Leave the switch panel hanging. [SEE FIGURES 1A & 1B]



ii

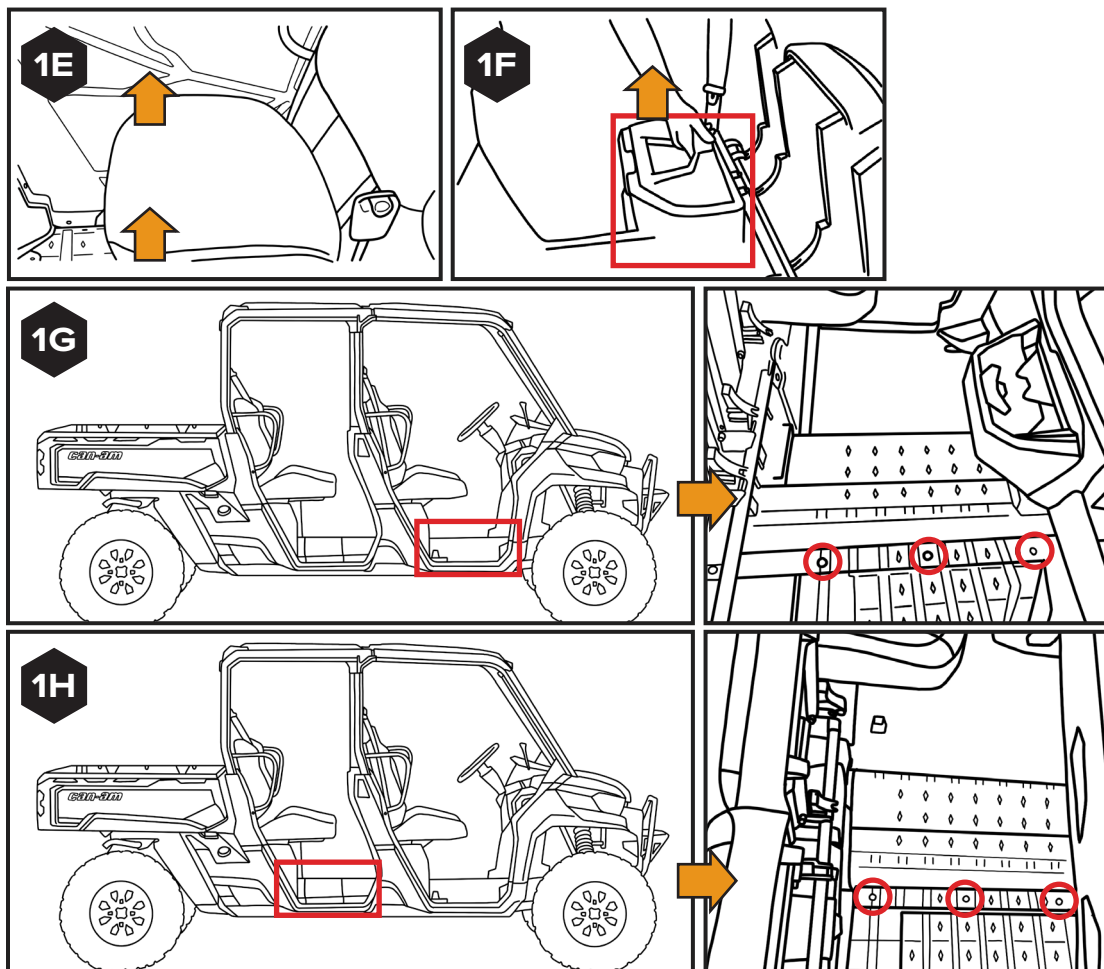
Remove one rocker switch knock out from the rocker switch panel by gently prying it off using a SMALL FLATHEAD SCREWDRIVER. You'll be installing the rocker switch provided in this kit to that slot in a future step. [SEE FIGURES 1C & 1D]



iii

Flip the passenger seat up and remove the storage box (if equipped). Remove the three push pins holding the front passenger floor panel using PUSH PIN PLIERS. [SEE FIGURES 1E – 1G]

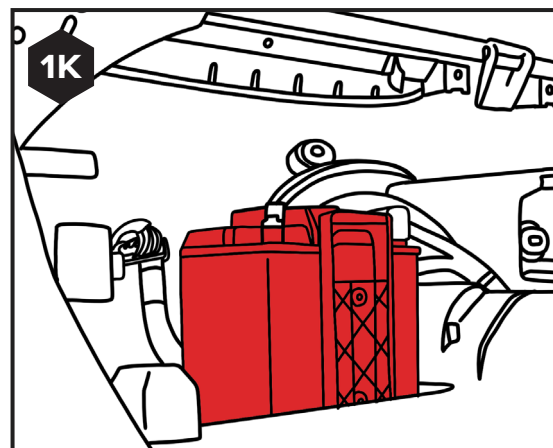
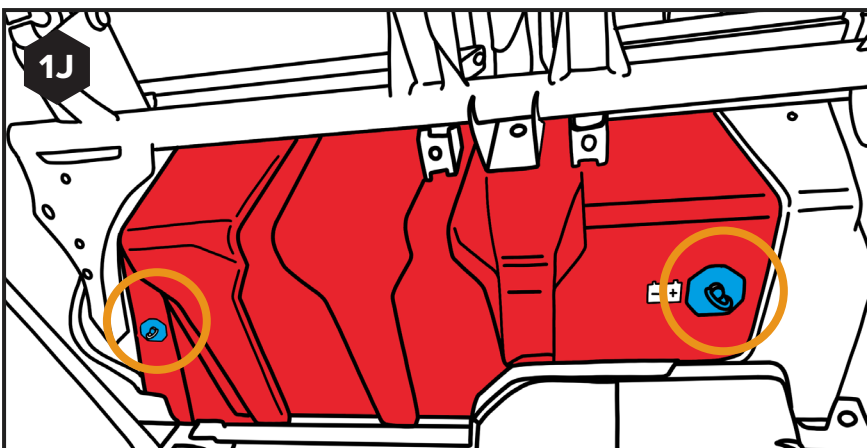
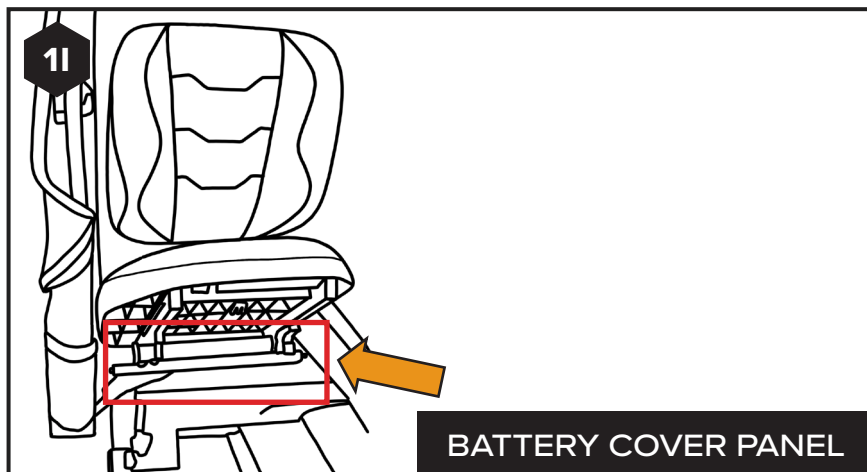
**NOTE:** If your Defender has two rows of seats; remove the rear floor tunnel panel using PUSH PIN PLIERS to remove the 3 push pins holding the panel. [SEE FIGURE 1H]





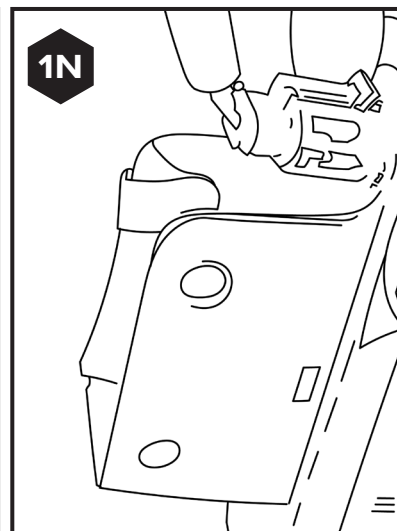
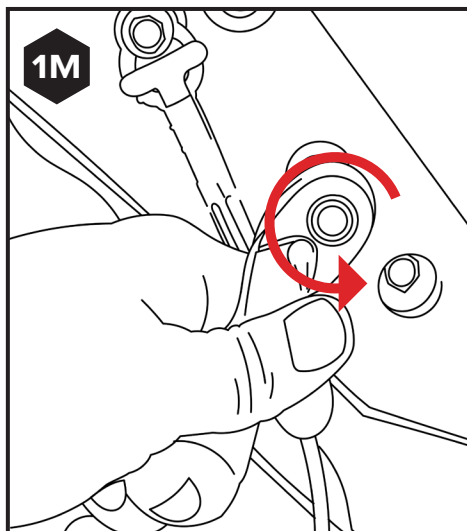
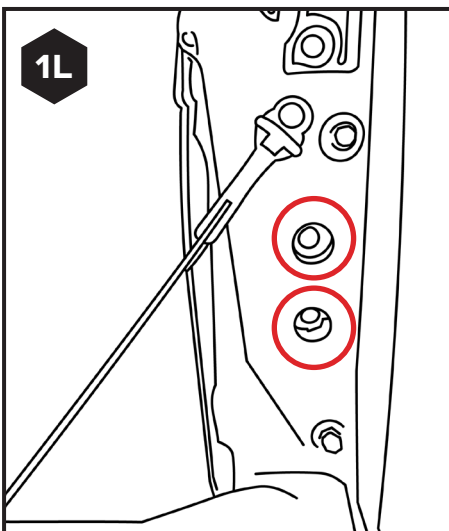
iv

Remove the battery cover panel by rotating the two twist pins to free the panel. [SEE FIGURES 1I – 1K]



v

Open the tailgate and remove the tail lights using a 10MM DEEP WELL SOCKET and RATCHET and set aside. [SEE FIGURES 1L - 1N]



i

Wipe your lower tailgate half using one of the rubbing alcohol wipes provided. Let dry.

Wipe the same surface with one of the adhesive promoter wipes provided. Let dry. [SEE FIGURES 2A-2C]



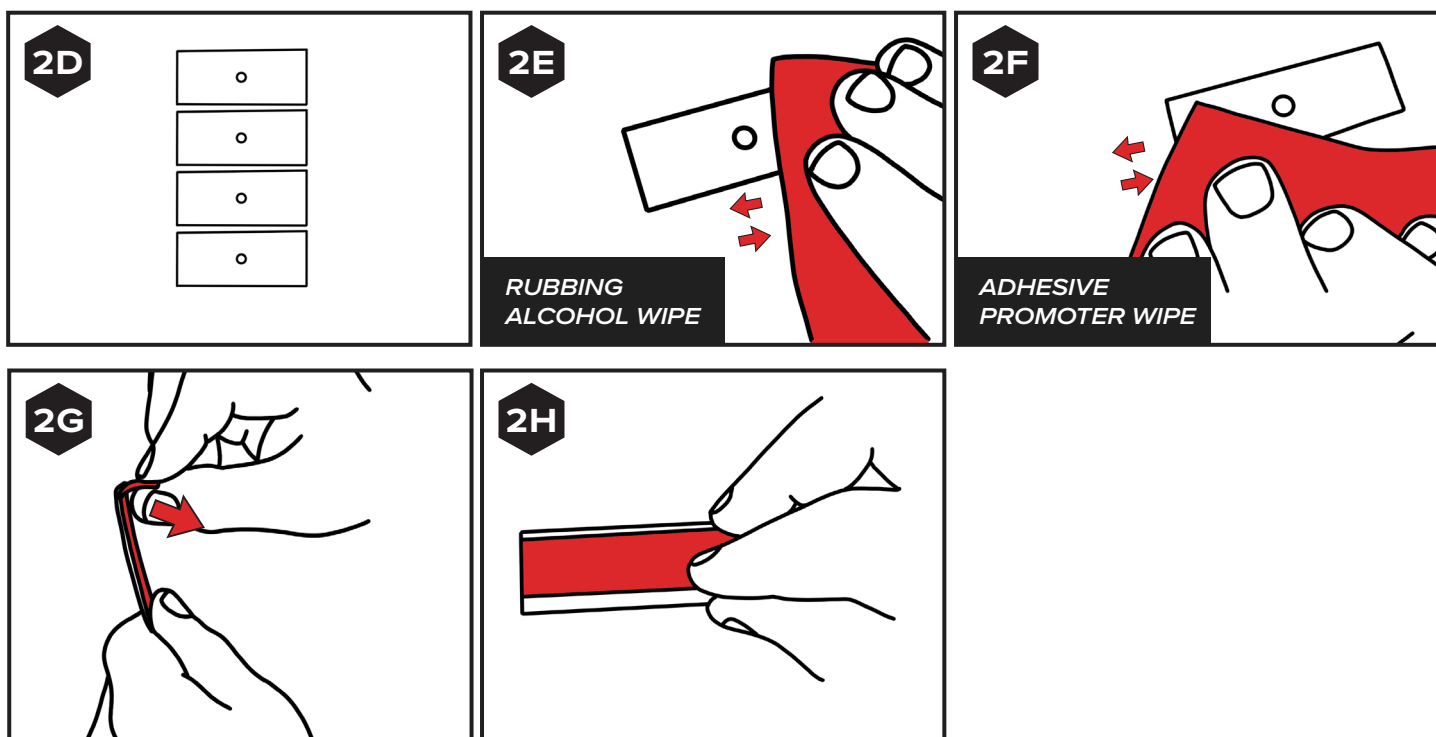
ii

Locate the four mounting clips provided in the kit. [SEE FIGURE 2D]

Clean the back surface of the mounting clips using a rubbing alcohol wipe. Let dry. [SEE FIGURE 2E]

Wipe down the surface of the mounting clips with the adhesive promoter wipe. Let dry. [SEE FIGURE 2F]

Place the double sided tape on to the back surface of the mounting clips and place them on the back of the light. [SEE FIGURE 2D - 2I]



2I

SPACE OUT CLIPS EVENLY

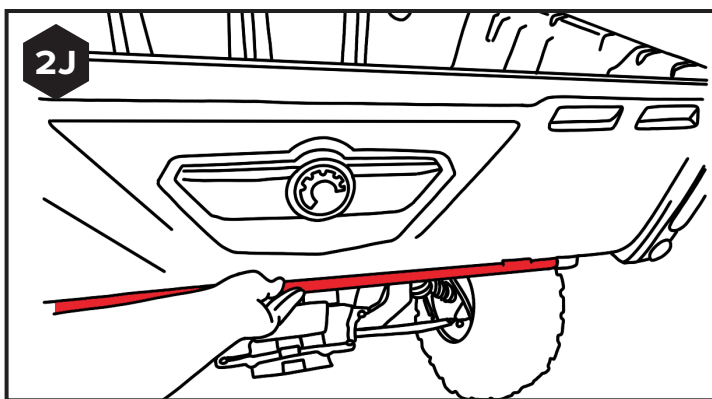


iii

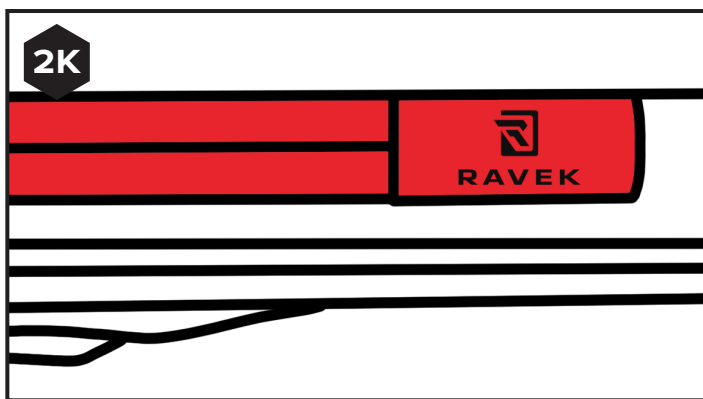
Peel off the double sided tape protective film and adhere the light to the clean tailgate surface. [SEE FIGURE 2J]

**NOTE:** Install the light so the RAVEK logos on the end caps are right side up. [SEE FIGURE 2K]

2J



2K



3

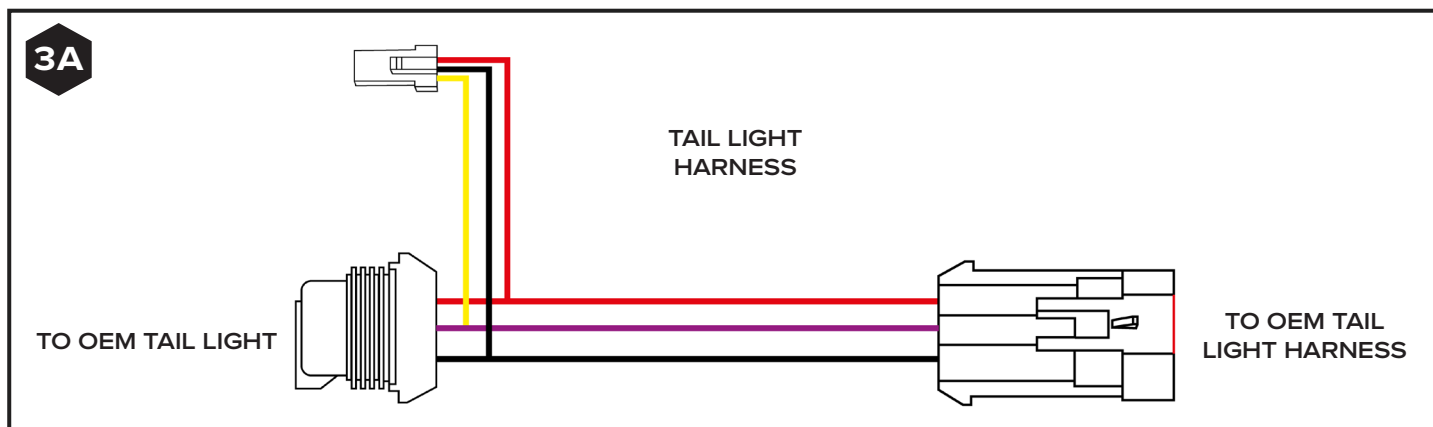
## MAKE YOUR CONNECTIONS

i

Grab both of your Tail Light Harnesses and plug them in line to your OEM tail light and harness. [SEE FIGURE 3A]

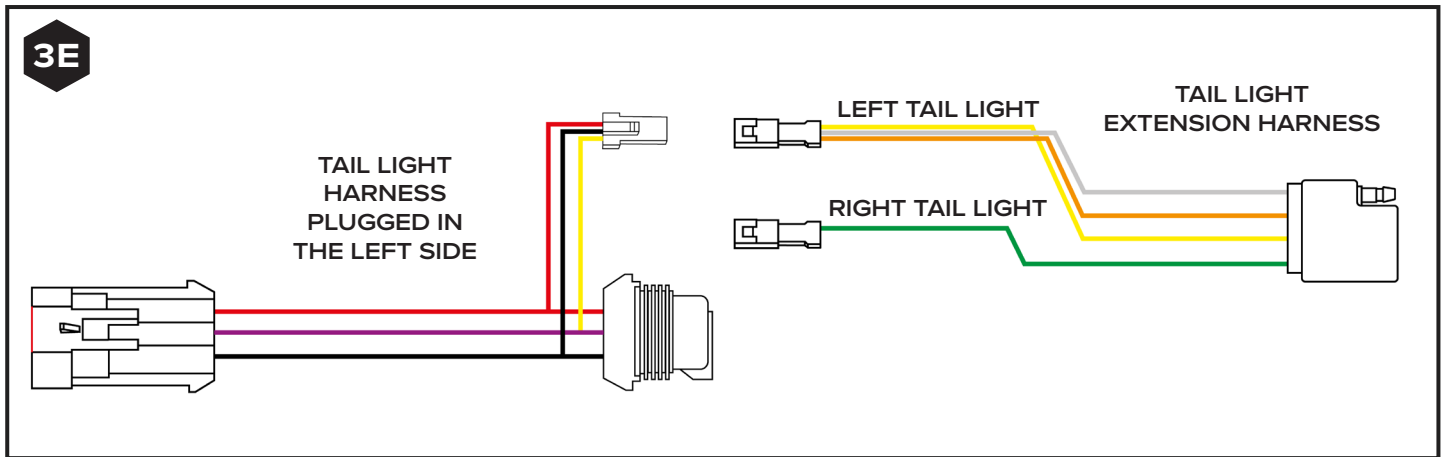
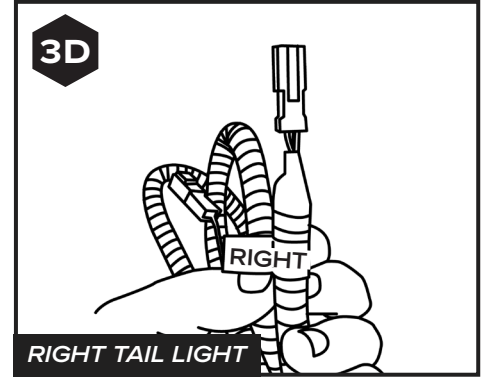
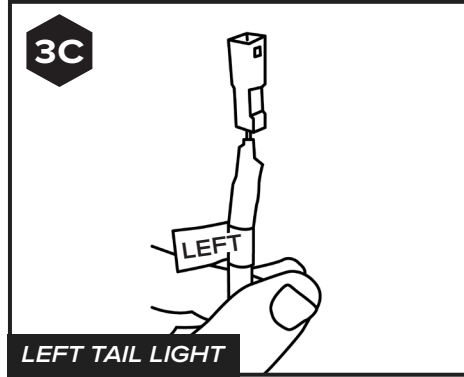
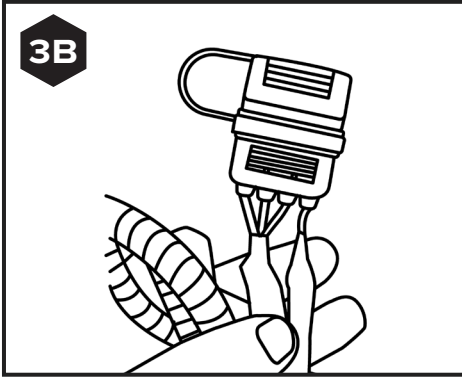
**NOTE:** If additional accessories are plugged into the tail light already, connect the Multi-function Tail Light Harness closest to the OEM tail light.

3A



ii

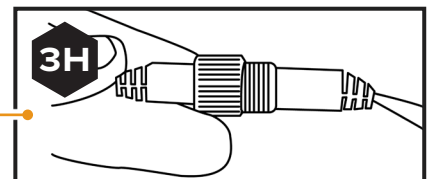
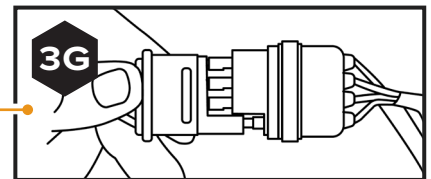
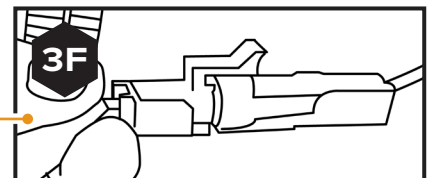
Grab your Tail Light Extension Harness and plug in each labeled connector to the corresponding Tail Light Harness, routing the Tail Light Extension Harness underneath the tailgate. [SEE FIGURES 3B – 3E AND DIAGRAM A]



ii

Set your Main Harness (harness with the controller box) in the engine compartment and make the following connections [SEE FIGURES 3F-3H]:

- Plug in the 1-pin connector coming out the white wire on the Main Harness to the Work Light Harness (harness with relay)
- Plug in the trailer connector coming out the Main Harness to the connector on the Tail Light Extension Harness on the middle of the Defender
- Plug in the 4 pin connector coming out the Main Harness to the connector on the light connector on the light to the left side of the Defender



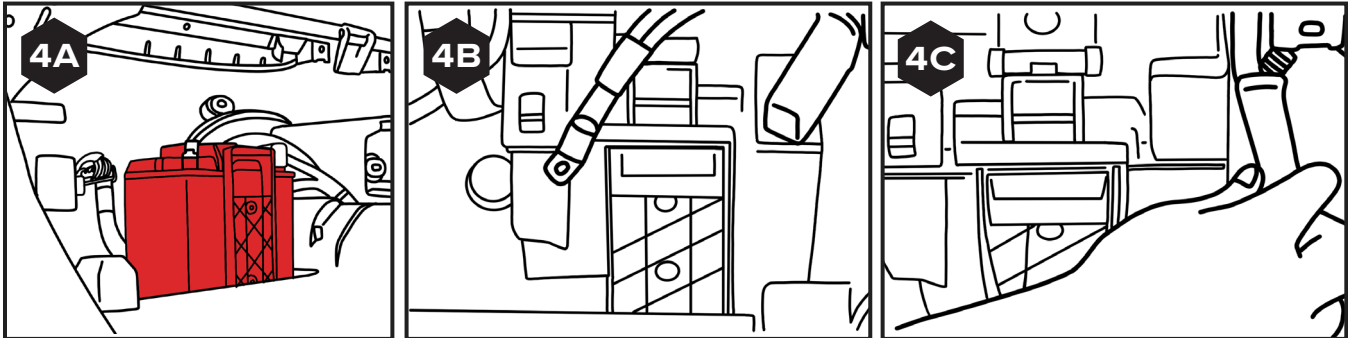


i

Disconnect both battery terminals on your Defender using a 10MM DEEP WELL SOCKET and a RATCHET. Battery located behind panel removed in step iv[SEE FIGURES 4A – 4C]

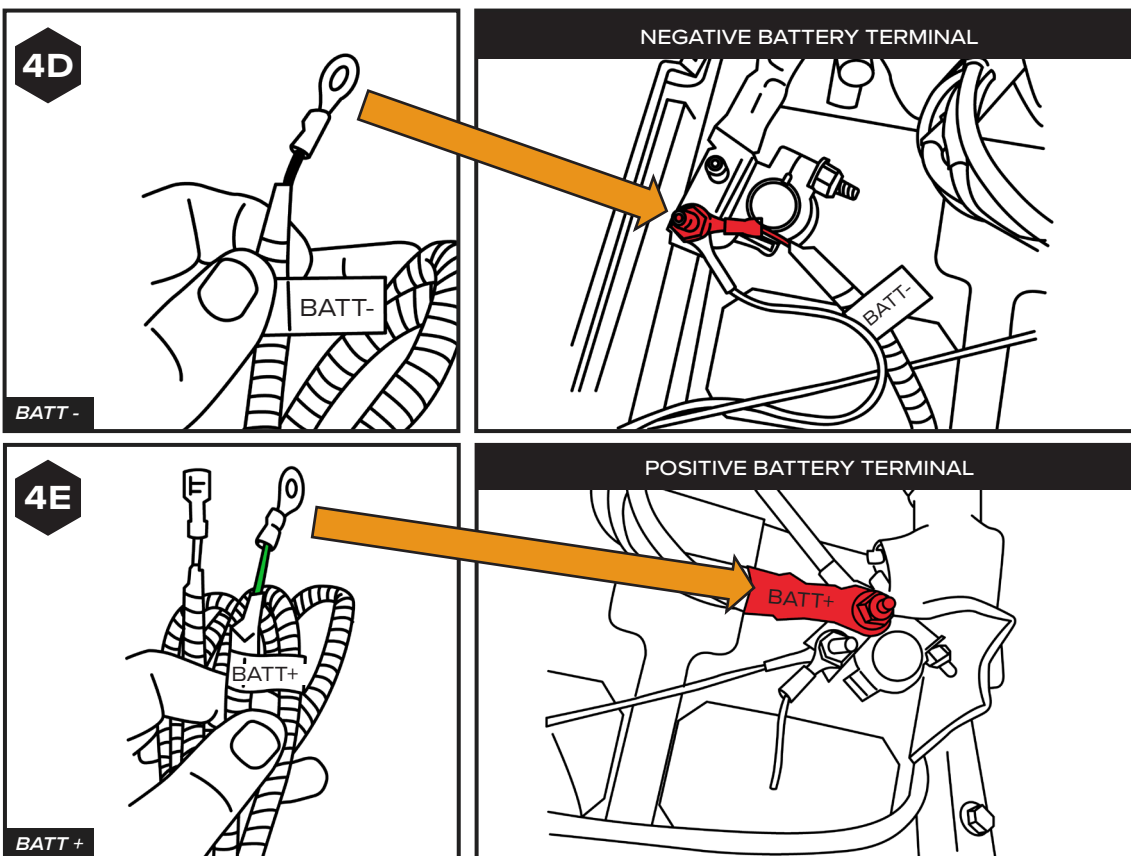
**NOTE:** Disconnect the negative battery terminal first to prevent arcing. Make sure cables don't touch each other or any metal surfaces when disconnected.

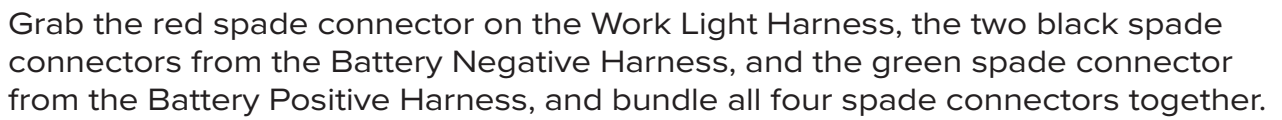
#### DISCONNECT NEGATIVE BATTERY TERMINAL FIRST



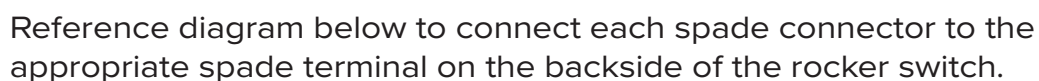
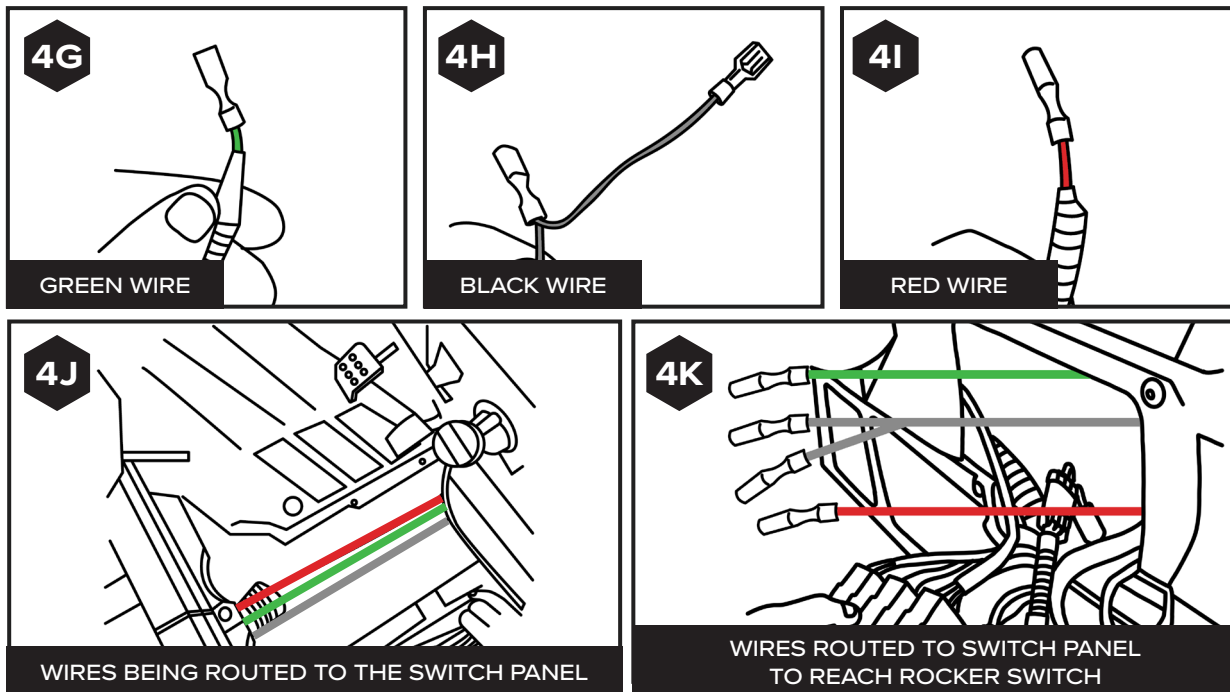
ii

Grab both your Battery Negative and Battery Positive Harnesses. Hook the ring terminal to the corresponding battery terminals and re-install 10mm nut on positive and negative battery terminals. [SEE FIGURES 4D AND 4E]



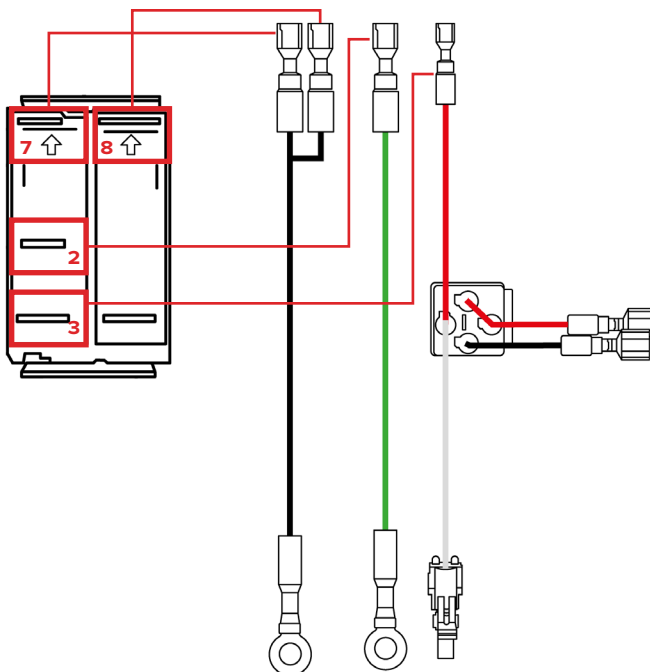


**NOTE:** Be sure to keep all wiring away from hot or moving components.



## 4J

- Plug in main ground spade connector to PIN #7 (BLACK WIRE)
- Plug in ground jumper spade connector to PIN #8 (BLACK WIRE)
- Plug in power (green spade connector) to PIN #2 (GREEN WIRE)
- Plug in the red spade connector on the Work Light Harness to PIN #3 (RED WIRE)



## V

Now is time to confirm light works as designed:

- Red Running Light
- Brake Light
- White Work Light (with vehicle on or off)

**NOTE:** If you have turn signal kit hooked up to your Defender; verify the turn signal feature built in to the light.

## 5

### TIDY UP YOUR MACHINE

## i

Go over all your wiring and secure it to the different frame tubes and OEM harnesses. [REFERENCE DIAGRAM A FOR OVERVIEW OF WIRING]

**NOTE:** Stay away from hot or moving components.

## ii

Once all of your wiring is secured with the help of the zip ties, cut all the excess zip ties using side cutter pliers.

## iii

With your wiring neatly routed and secured to the Defender, reverse steps 1.i. - 1.v. to reinstall the different Defender components.



**RAVEK**  
BUILT FOR MORE

## WHY RAVEK

Stock UTVs don't come with enough storage, lighting, comfort, and protection. That's why we started RAVEK.

We live to design, manufacture, and test innovative SxS upgrades that elevate the riding experience. Here's what you can expect from us:

- Durable products built to last (100% lifetime guarantee)
- UTV upgrades thoughtfully designed & tested by riders
- Outstanding installation support (videos & USA customer service)
- Constant flow of epic riding content (check out our social media)

We're confident your RAVEK product will earn its place on your machine. Please call or e-mail us if we can help.

- Harry & Ricky (Brothers & Owners)

## MESSAGE FROM THE DESIGNER

When I designed the UTV Multi-function Tail Light, I thought about all the aspects a UTV rider needs: added visibility, sleek look, and easy installation. This product checks all the boxes, which is why I love it. It makes your machine look meaner and makes you and your ride crew safe at night on the trails.