

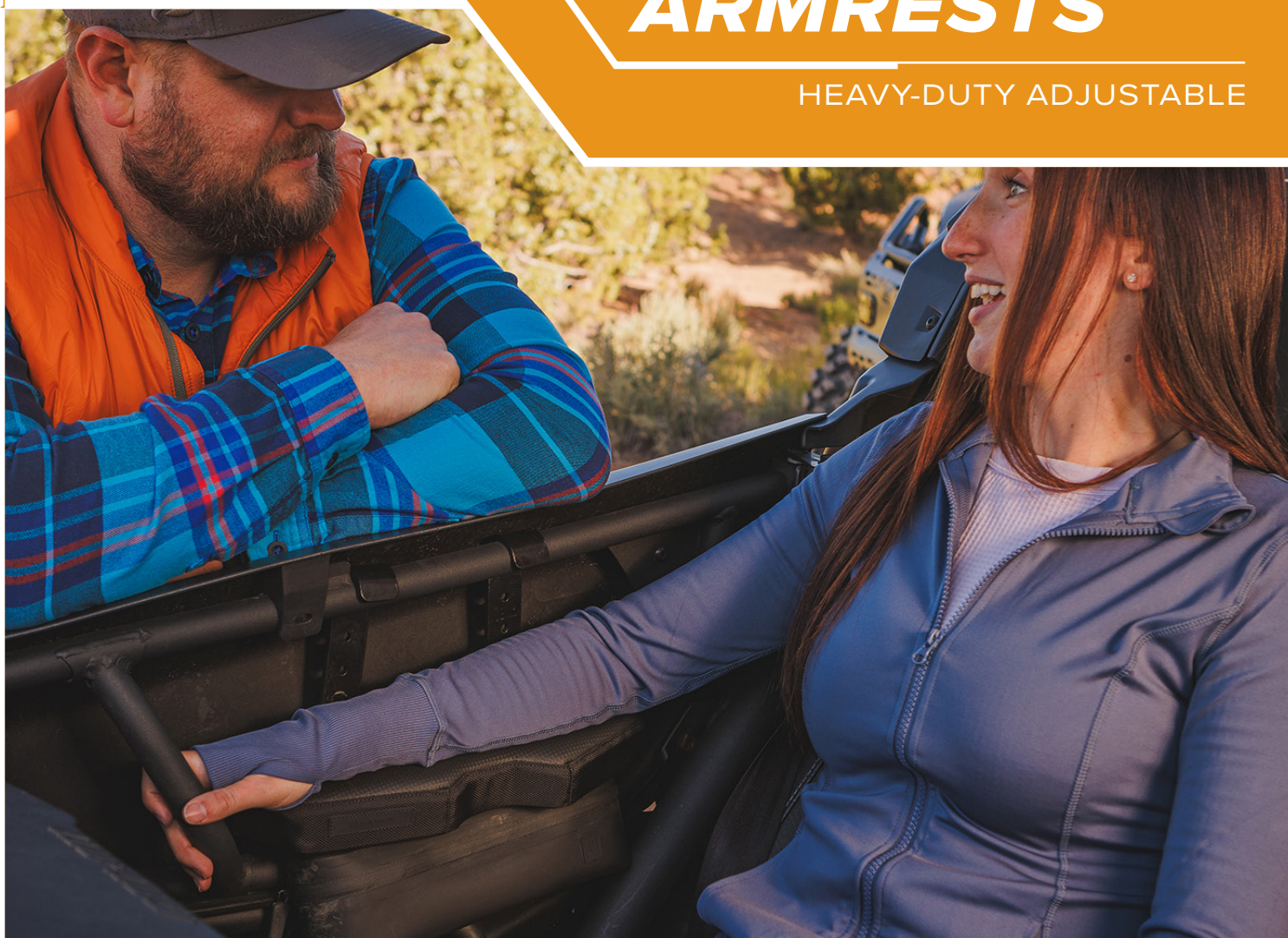


RAVEK

CAN-AM MAVERICK X3 2017+

ARMRESTS

HEAVY-DUTY ADJUSTABLE



INSTRUCTION MANUAL



RAVEK

CAN-AM MAVERICK X3 2017+

ARMRESTS

Part #: 65-300

Fitment: CAN-AM MAVERICK X3 2017+

PARTS INCLUDED:

- M6-1.0 X 15MM ALLEN SCREW (4x)
- 1/4-20 X 3/4IN PHILLIPS SCREW (4x)
- SHORT J-MOUNT BRACKET (2x)
- LONG J-MOUNT BRACKET (2x)
- L-MOUNT BRACKET (4x)
- ARMREST PAD (2x)
- M6 X 1.0 NYLOCK NUT (4x)

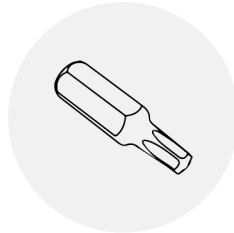
TOOLS NEEDED:



10mm Wrench



Phillips Screwdriver



T-30 Torx Driver



4mm Allen Wrench

INSTALL VIDEO TUTORIAL

**DON'T LIKE INSTRUCTIONS?
VISIT OUR WEBSITE TO ACCESS
THE VIDEO TUTORIAL.**

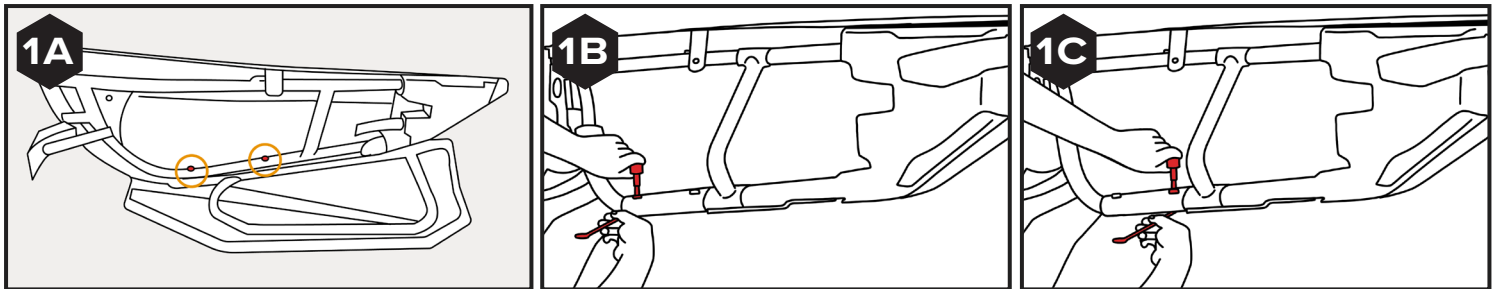


1

REMOVE BOLTS

Starting from the driver's side door of the Maverick, remove the bolts highlighted below using a T-30 TORX and a 10MM WRENCH on the bottom to hold the nut. [SEE FIGURES 1A – 1C]

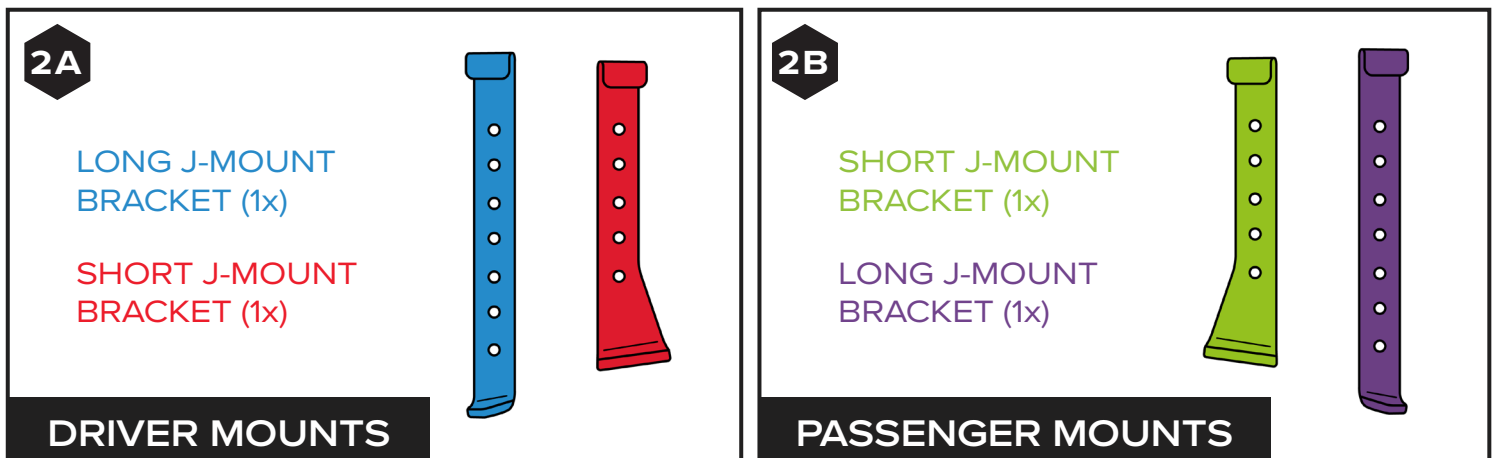
Note: Do not discard OEM spacers.



2

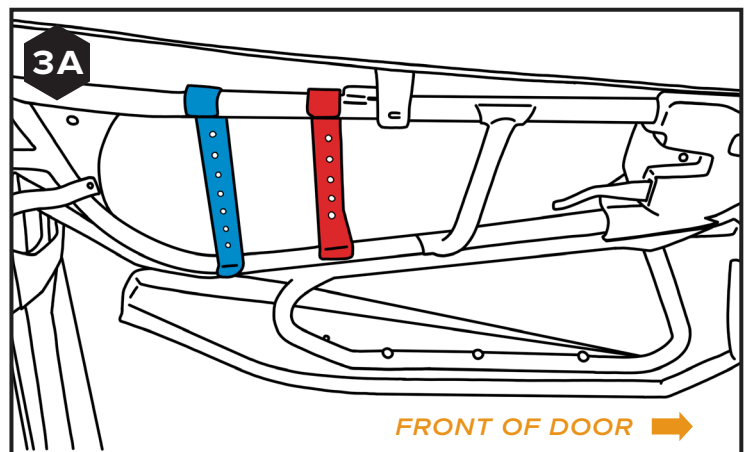
INSTALL J-MOUNT BRACKETS

Identify the driver and passenger side J-mount brackets. [SEE FIGURES 2A – 2B]



3

Once identified, grab your driver-side short and long J-mount brackets and place them on the door frame. [SEE FIGURE 3A]



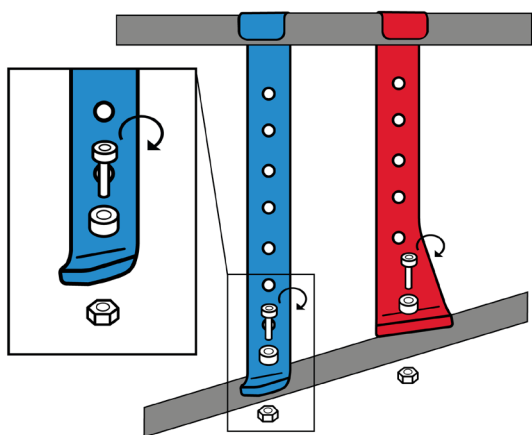
4

SECURE J-MOUNT BRACKETS TO DOOR

Secure your J-mount brackets to your driver's side door frame using the stock OEM hardware removed in step 1.

Follow step 1 in reverse order to fasten the hardware. [SEE FIGURE 4A]

4A



LONGER STOCK OEM BOLT GOES WITH SHORT J-MOUNT (CLOSER TO FRONT)

FRONT OF DOOR ➡

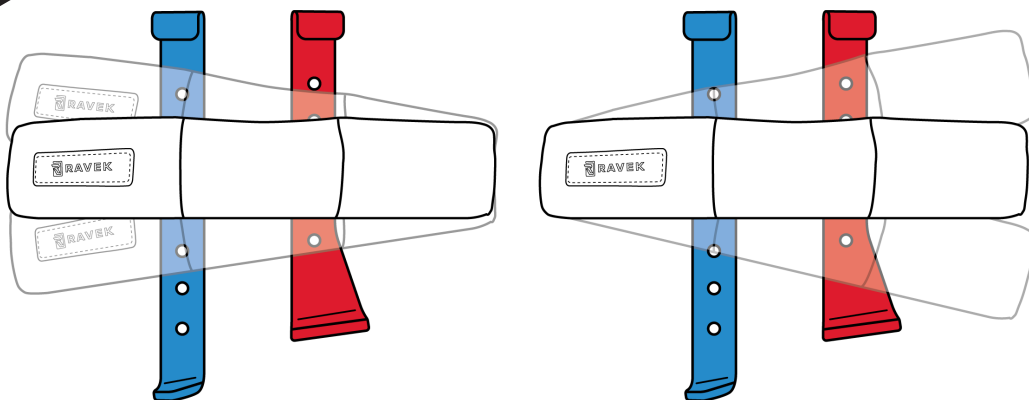
5

INSTALL L-MOUNT BRACKETS

Now it's time for you to choose what armrest height and angle works best for you. By using different combinations of the mounting holes on the J-Brackets, you can customize the height and angle of your armrest. [SEE FIGURE 5A].

NOTE: We suggest sitting in your Maverick and loosely assembling different potential armrest heights and angles to see what feels most natural to you. **We recommend 4 holes from the top.**

5A



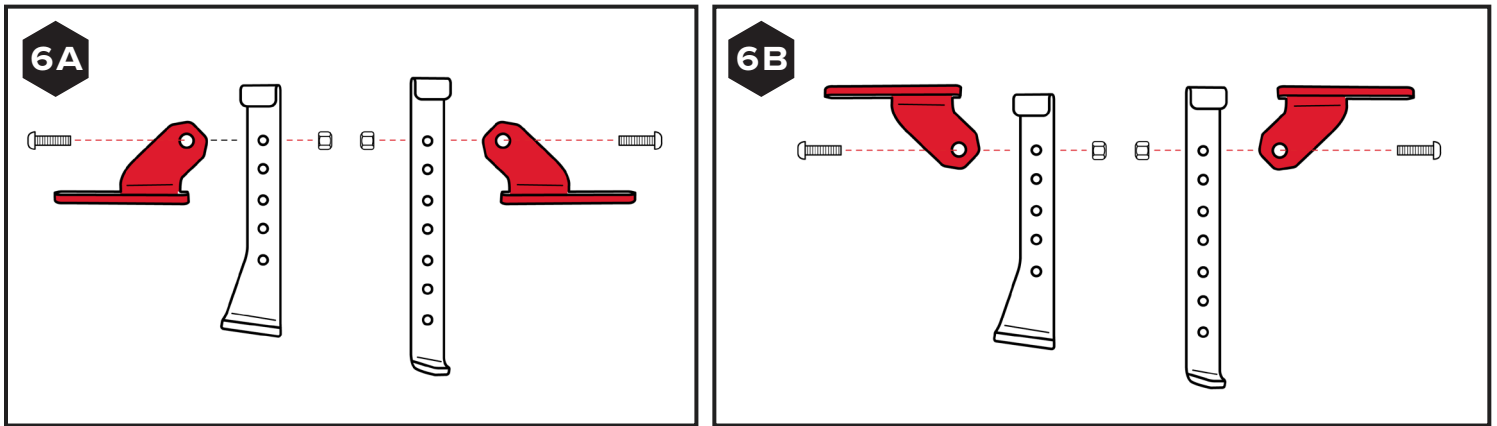
6

INSTALL L-MOUNT BRACKETS

With both of your J-mount brackets secured to the driver side door frame, install two L-mount brackets using two M6 X 1.0 NYLOCK NUT and M6-1.0 X 15MM ALLEN SCREWS with a 4 mm Allen and 10 mm wrench to your chosen mounting locations.

NOTE: Mount the L-mount brackets on any of the holes on the J-mount bracket, depending on which height angle you would like your armrest pad to sit in.

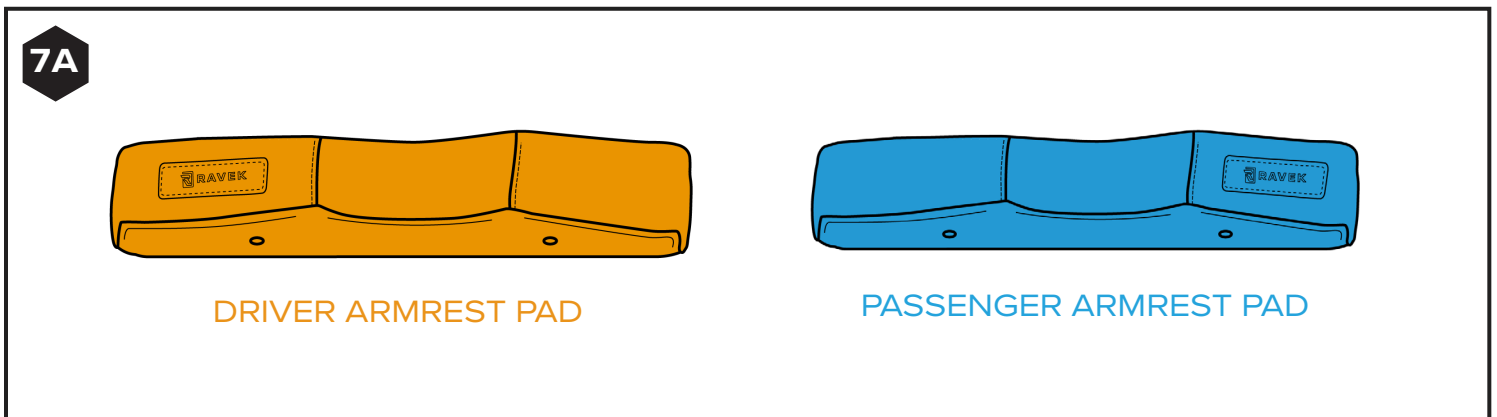
NOTE: Install the L-mount brackets as seen in **FIGURE 6A** for a lower armrest pad placement or **FIGURE 6B** for a higher armrest pad placement.

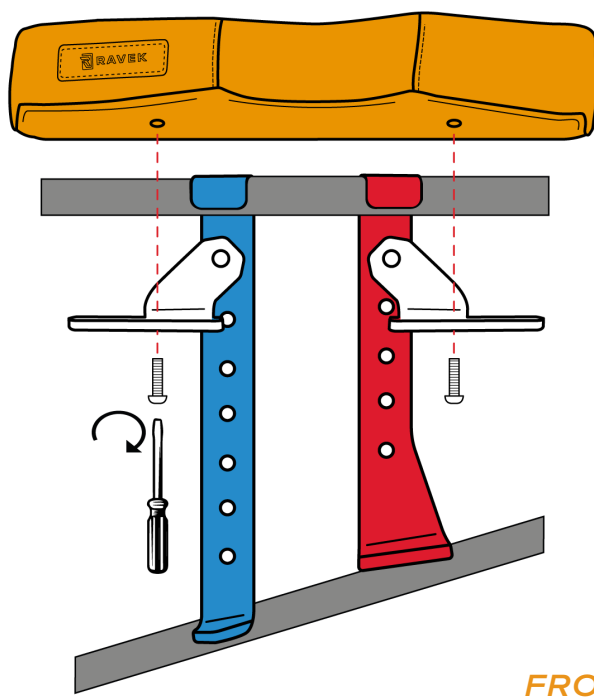


7

INSTALL ARMREST PAD

Now with your mounting brackets secured to the door's frame, install your driver's side armrest pad using two 1/4-20 X 3/4IN PHILLIPS SCREWS with a Phillips screwdriver. [SEE FIGURES 7A AND 7B]



7B**8**

WANT STORAGE?

Add RAVEK's CAN-AM Maverick X3 Armrest Pouches. Each pouch is designed to mount to your new armrest. (RAVEK Part #: H65-300PO)

9

REPEAT STEPS 1-7 ON PASSENGER SIDE

Repeat steps 1-7 on the passenger's side of the Maverick.



RAVEK

BUILT FOR MORE

WHY RAVEK

Stock UTVs don't come with enough storage, lighting, comfort, and protection. That's why we started RAVEK.

We live to design, manufacture, and test innovative SxS upgrades that elevate the riding experience. Here's what you can expect from us:

- Durable products built to last (100% lifetime guarantee)
- UTV upgrades thoughtfully designed & tested by riders
- Outstanding installation support (videos & USA customer service)
- Constant flow of epic riding content (check out our social media)

We're confident your RAVEK product will earn its place on your machine. Please call or e-mail us if we can help.

- Harry & Ricky (Brothers & Owners)

MESSAGE FROM THE DESIGNER

From the initial design phase, we knew these armrests had to be extremely durable, comfortable, and adjustable to fit different rider sizes and riding styles.

After extensive design, engineering, prototyping, and aggressive field testing – these armrests came out just the way I'd hoped.

They're 100% waterproof, have 350 lbs. of load-bearing capacity, have over 15 adjustable positions at installation, and are filled with premium memory-foam padding. I love riding with them and expect you and your crew will too.



RAVEK
BUILT FOR MORE